



Report of the 101st Session of the IPHC Annual Meeting (AM101)

Vancouver, BC, Canada, 27-31 January 2025

Commissioners

Canada	United States of America
Mark Waddell	Jon Kurland
Neil Davis	Robert Alverson
Peter DeGreef	Richard Yamada

Executive Director

David T. Wilson, Ph.D.

DISTRIBUTION:

Participants in the Session
Members of the Commission
IPHC Secretariat

BIBLIOGRAPHIC ENTRY

IPHC 2025. Report of the 101st Session of the IPHC Annual Meeting (AM101). Vancouver, BC, Canada 27-31 January 2025.
IPHC-2025-AM101-R, 52 pp.



INTERNATIONAL PACIFIC
HALIBUT COMMISSION

The designations employed and the presentation of material in this publication and its lists do not imply the expression of any opinion whatsoever on the part of the International Pacific Halibut Commission (IPHC) concerning the legal or development status of any country, territory, city or area or of its authorities, or concerning the delimitation of its frontiers or boundaries.

This work is protected by copyright. Fair use of this material for scholarship, research, news reporting, criticism or commentary is permitted. Selected passages, tables or diagrams may be reproduced for such purposes provided acknowledgment of the source is included. Major extracts or the entire document may not be reproduced by any process without the written permission of the Executive Director, IPHC.

The IPHC has exercised due care and skill in the preparation and compilation of the information and data set out in this publication. Notwithstanding, the IPHC, its employees and advisers, assert all rights and immunities, and disclaim all liability, including liability for negligence, for any loss, damage, injury, expense or cost incurred by any person as a result of accessing, using or relying upon any of the information or data set out in this publication, to the maximum extent permitted by law including the International Organizations Immunities Act.

Contact details:

International Pacific Halibut Commission
2320 W. Commodore Way, Suite 300
Seattle, WA, 98199-1287, U.S.A.
Phone: +1 206 634 1838
Fax: +1 206 632 2983
Email: secretariat@iphc.int
Website: <https://www.iphc.int/>

ACRONYMS

AM	Annual Meeting
CB	Conference Board
CKMR	Close Kin Mark-Recapture
DFO	Fisheries and Ocean Canada
FCEY	Fishery Constant Exploitation Yield
FISS	Fishery-Independent Setline Survey
FY	Financial Year
GSA	General Services Administration
IPHC	International Pacific Halibut Commission (or Commission)
MSAB	Management Strategy Advisory Board
NPFMC	North Pacific Fishery Management Council
NOAA	National Oceanic and Atmospheric Administration
O32	Over 32" fish
PAB	Processor Advisory Board
PFMC	Pacific Fishery Management Council
RAB	Research Advisory Board
SB	Spawning Biomass
SRB	Scientific Review Board
SPR	Spawning Potential Ratio
TCEY	Total Constant Exploitation Yield
U26	Under 26" fish
U32	Under 32" fish
WPUE	Weight-Per-Unit-Effort

DEFINITIONS

A set of working definitions are provided in the IPHC Glossary of Terms and abbreviations: <https://www.iphc.int/the-commission/glossary-of-terms-and-abbreviations>

HOW TO INTERPRET TERMINOLOGY CONTAINED IN THIS REPORT

This report has been written using the following terms and associated definitions so as to remove ambiguity surrounding how particular paragraphs should be interpreted.

Level 1: RECOMMENDED; RECOMMENDATION; ADOPTED (formal); **REQUESTED; ENDORSED; ACCEPTED** (informal): A conclusion for an action to be undertaken, by a Contracting Party, a subsidiary (advisory) body of the Commission and/or the IPHC Secretariat.

Level 2: AGREED: Any point of discussion from a meeting which the Commission considers to be an agreed course of action covered by its mandate, which has not already been dealt with under Level 1 above; a general point of agreement among delegations/participants of a meeting which does not need to be elevated in the Commission's reporting structure.

Level 3: NOTED/NOTING; CONSIDERED; URGED; ACKNOWLEDGED: General terms to be used for consistency. Any point of discussion from a meeting which the Commission considers to be important enough to record in a meeting report for future reference. Any other term may be used to highlight to the reader of an IPHC report, the importance of the relevant paragraph. Other terms may be used but will be considered for explanatory/informational purposes only and shall have no higher rating within the reporting terminology hierarchy than Level 3.

TABLE OF CONTENTS

EXECUTIVE SUMMARY	6
1. OPENING OF THE SESSION	9
2. ADOPTION OF THE AGENDA AND ARRANGEMENTS FOR THE SESSION	9
3. IPHC PROCESS	9
3.1 Update on actions arising from the 100 th Session of the IPHC Annual Meeting (AM100), 2024 Special Sessions, Intersessional Decisions, and the 100 th Session of the IPHC Interim Meeting (IM100).....	9
3.2 Report of the IPHC Secretariat (2024)	9
3.3 2 nd IPHC Performance Review (PRIPHC02): Implementation of recommendations.....	10
3.4 Reports of the IPHC Management Strategy Advisory Board.....	10
3.5 Reports of the IPHC Scientific Review Board.....	10
3.6 Report of the 25 th Session of the IPHC Research Advisory Board (RAB025)	10
3.7 International Pacific Halibut Commission 5-Year Program of Integrated Research and Monitoring (2022-26)	10
4. FISHERY MONITORING.....	11
4.1 Fishery-dependent data overview (2024).....	11
4.1.1 Port Operations.....	11
4.1.2 Fisheries Data.....	11
4.2 Fishery-independent data overview (2024)	12
4.2.1 IPHC Fishery-Independent Setline Survey (FISS) design and implementation in 2024.....	12
5. STOCK STATUS OF PACIFIC HALIBUT (2024).....	13
5.1 Space-time modelling of survey data	13
5.2 Stock Assessment: Data overview and stock assessment (2024).....	14
6. MANAGEMENT STRATEGY EVALUATION.....	17
6.1 IPHC Management Strategy Evaluation: update	17
7. HARVEST DECISION TABLE 2025.....	18
7.1 Stock projections and harvest decision table 2025-2027.....	18
7.2 Pacific halibut mortality projections using the IPHC mortality projection tool (2025).....	20
8. FISS DESIGN EVALUATIONS 2025-2029	21
8.1 2025-29 FISS design evaluation	21
9. BIOLOGICAL AND ECOSYSTEM SCIENCES – PROJECT UPDATES.....	23
9.1 Report on current and future biological and ecosystem science research activities	23
10. IPHC FISHERY REGULATIONS: PROPOSALS FOR THE 2024-25 PROCESS.....	24
10.1 IPHC Secretariat fishery regulation proposals	24
10.1.1 IPHC Fishery Regulations: Mortality and Fishery Limits (Sect. 5)	24
10.1.2 IPHC Fishery Regulations: Commercial Fishing Periods (Sect. 9)	25
10.1.3 IPHC Fishery Regulations: minor amendments	25
10.2 Contracting Party fishery regulation proposals	26
10.2.1 IPHC Fishery Regulations: Recreational (Sport) Fishing for Pacific Halibut – IPHC Regulatory Areas 2C, 3A, 3B, 4A, 4B, 4C, 4D, 4E (Sect. 28) (Charter Management Measures in IPHC Regulatory Areas 2C and 3A (USA)).....	26
10.3 Stakeholder fishery regulation proposals	26
10.3.1 IPHC Fishery Regulations: Commercial Fishing Periods (Sect. 9) (Regulatory Area 2B).....	26
10.3.2 IPHC Fishery Regulations: Application of Commercial Fishery Limits (Sect. 12) – addressing concerns regarding localized depletion around St. Matthew Island.....	26
10.3.3 IPHC Fishery Regulations: Mortality and Fishery Limits (Sect. 5) (Regulatory Area 2A).....	26
10.3.4 Other proposal (Non-IPHC Fishery Regulations): Rebuilding Plan for Pacific halibut	26
10.3.5 IPHC Fishery Regulations: Mortality and Fishery Limits (Sect. 5) – definition of reaction to overfishing	26
10.4 Stakeholder statements.....	27

11. CONTRACTING PARTY NATIONAL REPORTS	27
11.1 <i>Canada</i>	27
11.2 <i>United States of America</i>	27
12. REPORT OF THE 101ST SESSION OF THE IPHC FINANCE AND ADMINISTRATION COMMITTEE (FAC101).....	27
12.1 <i>Financial Statements for FY2024</i>	27
12.2 <i>Annual independent auditor’s report (FY2024)</i>	27
12.3 <i>FY2025 Budget – update</i>	28
12.4 <i>Budget estimates: FY2026 (for approval); FY2027 and FY2028 (for information)</i>	28
13. REPORT OF THE 95TH SESSION OF THE IPHC CONFERENCE BOARD (CB095).....	29
14. REPORT OF THE 30TH SESSION OF THE IPHC PROCESSOR ADVISORY BOARD (PAB030).....	29
15. OTHER BUSINESS.....	29
15.1 <i>IPHC meetings calendar (2025-27)</i>	29
15.2 <i>Election of a Chairperson and Vice-Chairperson for the next year</i>	30
16. REVIEW OF THE DRAFT AND ADOPTION OF THE REPORT OF THE 101ST SESSION OF THE IPHC ANNUAL MEETING (AM101)	30
APPENDIX I LIST OF PARTICIPANTS FOR THE 101ST SESSION OF THE IPHC ANNUAL MEETING (AM101)	31
APPENDIX II AGENDA FOR THE 101ST SESSION OF THE IPHC ANNUAL MEETING (AM101).....	37
APPENDIX III LIST OF DOCUMENTS FOR THE 101ST SESSION OF THE IPHC ANNUAL MEETING (AM101).....	41
APPENDIX IV IPHC FISHERY REGULATIONS: MORTALITY AND FISHERY LIMITS (SECT. 5).....	44
APPENDIX V IPHC FISHERY REGULATIONS: COMMERCIAL FISHING PERIODS (SECT. 9).....	46
APPENDIX VI IPHC FISHERY REGULATIONS: RECREATIONAL (SPORT) FISHING FOR PACIFIC HALIBUT—IPHC REGULATORY AREAS 2C, 3A, 3B, 4A, 4B, 4C, 4D, 4E (SECT. 28) – CHARTER MANAGEMENT MEASURES IN IPHC REGULATORY AREAS 2C AND 3A (USA).....	47
APPENDIX VII FY2025 BUDGET: REVISED AND ADOPTED.....	48
APPENDIX VIII FY2026: PROPOSED	49
APPENDIX IX FY2027 INDICATIVE BUDGET	50
APPENDIX X FY2028 INDICATIVE BUDGET.....	51
APPENDIX XI CONSOLIDATED SET OF RECOMMENDATIONS AND REQUESTS OF THE 101ST SESSION OF THE IPHC ANNUAL MEETING (AM101) (27-31 JANUARY 2025)	52

EXECUTIVE SUMMARY

The 101st Session of the International Pacific Halibut Commission (IPHC) Annual Meeting (AM101) was held in Vancouver, BC, Canada, from 27-31 January 2025. A total of 21 participants (6 Commissioners; Members; 15 advisors/experts) attended the Session from the two (2) Contracting Parties, as well as 165 members of the public (104 in-person and 61 remote). The list of 186 participants is provided at [Appendix I](#). The meeting was opened by the Vice-Chairperson, Mr. Jon Kurland (U.S.A.), who welcomed participants.

The following are a subset of the complete recommendations and requests for action from the AM101, that are provided at [Appendix XI](#).

IPHC FISHERY REGULATIONS 2025

IPHC Fishery Regulations: Mortality and Fishery Limits (Sect. 5)

([para. 75](#)) The Commission **ADOPTED** fishery regulation proposal [IPHC-2025-AM101-PropA1](#), that provided the mortality and fishery limits framework for population at the AM101 ([Appendix IV](#)). [*CAN/USA: Unanimous*]

([para. 76](#)) The Commission **ADOPTED** the distributed mortality limits for each Contracting Party, by IPHC Regulatory Area ([Table 5](#)), and sector, as provided for in [Appendix IV](#). [*CAN/USA: Unanimous*]

Table 5. Adopted TCEY mortality limits for 2025

Contracting Party IPHC Regulatory Area	Mortality limit (TCEY) (metric tonnes)	Mortality limit (TCEY) (mlbs)
Canada Total: 2B	2,472.08	5.45
USA: 2A	748.43	1.65
USA: 2C	2,367.75	5.22
USA: 3A	4,118.62	9.08
USA: 3B	1,297.27	2.86
USA: 4A	607.81	1.34
USA: 4B	471.74	1.04
USA: 4CDE	1,397.06	3.08
United States of America Total	11,008.68	24.27
Total (IPHC Convention Area)	13,480.75	29.72

IPHC Fishery Regulations: Commercial Fishing Periods (Sect. 9)

([para. 81](#)) The Commission **ADOPTED** fishery regulation proposal [IPHC-2025-AM101-PropA2](#), that provided the framework for setting fishing periods for the commercial Pacific halibut fisheries. [*CAN/USA: Unanimous*]

Commercial fishing periods

([para. 83](#)) The Commission **ADOPTED** fishing periods for 2025 as provided below, thereby superseding the relevant portions of Section 9 of the IPHC Pacific halibut fishery regulations ([Appendix V](#)) by specifying that commercial fishing for Pacific halibut in all IPHC Regulatory Areas may begin no earlier than 06:00 hrs local time on 20 March 2025 and must cease at 23:59 hrs local time on 7 December 2025. [*CAN/USA: Unanimous*]

IPHC Fishery Regulations: Recreational (Sport) Fishing for Pacific Halibut – IPHC Regulatory Areas 2C, 3A, 3B, 4A, 4B, 4C, 4D, 4E (Sect. 28) (Charter Management Measures in IPHC Regulatory Areas 2C and 3A (USA))

([para. 85](#)) The Commission **ADOPTED** fishery regulation proposal [IPHC-2025-AM101-PropB1](#), that included charter management measures in IPHC Regulatory Areas 2C and 3A reflective of mortality limits adopted by the IPHC and resulting allocations under the North Pacific Fisheries Management Council's (NPFMC) Pacific halibut Catch Sharing Plan. ([Appendix VI](#)). [*CAN/USA: Unanimous*]

RECOMMENDATIONS

Nil

REQUESTS

Report of the 25th Session of the IPHC Research Advisory Board (RAB025)

AM101–Req.01 ([para. 21](#)) The Commission **REQUESTED** that additional Canadian membership beyond the two (2) current RAB members would be desirable and encouraged the Canadian delegation to explore recruiting new members from Canada.

Port Operations

AM101–Req.02 ([para. 30](#)) The Commission **REQUESTED** an annual compilation of reports of comments received by the IPHC's Fisheries Data Specialists (Field) on current harvesting conditions.

Fisheries Data

AM101–Req.03 ([para. 32](#)) The Commission **REQUESTED** that the description of data on non-directed discard mortality for IPHC Regulatory Areas 3A and 3B be updated to align with the information provided in [IPHC-2025-AM101-NR02 Rev 1](#). (Note: A Rev_2 of this paper was published on 30 January 2025 to accommodate this request in-session: [IPHC-2025-AM101-08 Rev 2](#)).

Management Strategy Evaluation

AM101–Req.04 ([para. 53](#)) The Commission **REQUESTED** that the Secretariat facilitate informal intersessional workshops, consisting of Commissioners and key advisors, to review and consider the draft Harvest Strategy Policy, for adoption in mid-to-late 2025.

IPHC Fishery Regulations: Commercial Fishing Periods (Sect. 9) (Regulatory Area 2B)

AM101–Req.05 ([para. 88](#)) The Commission **REQUESTED** that the IPHC Secretariat prepare an analysis detailing the biological, logistical and socioeconomic effects of year-round fishing in Canada, including challenges related to data compilation and marketing implications, for presentation at AM102.

IPHC Fishery Regulations: Application of Commercial Fishery Limits (Sect. 12) – addressing concerns regarding localized depletion around St. Matthew Island

AM101–Req.06 ([para. 90](#)) The Commission **REQUESTED** that the Secretariat communicate the details of proposal [IPHC-2025-AM101-PropC2](#) to the NPFMC for their awareness and consideration and specifically to advise the NPFMC that the Commission considers that the proposal falls under the NPFMC purview.

IPHC Fishery Regulations

AM101-Req.07 (para. 124) The Commission **REQUESTED** that the IPHC Secretariat finalise and publish the IPHC *Pacific Halibut Fishery Regulations (2025)* as soon as possible, **NOTING** that only minor editorial and formatting changes are permitted beyond the decisions made by the Commission at the AM101.

Other decisions:***Annual independent auditor's report (FY2024)***

(para. 102) The Commission **ACCEPTED** the independent external auditors report for FY2024 ([IPHC-2025-FAC101-05](#)), as per Regulation 14 of the IPHC Financial Regulations (2024), by consensus [*CAN/USA: Unanimous*]

FY2025 Budget – update

(para. 106) The Commission **ADOPTED** the amended FY2025 budget (1 October 2024 to 30 September 2025), as detailed in [Appendix VII](#), noting that the amendments do not change the previously adopted Contracting Party contributions for FY2025: [*CAN/USA: Unanimous*]

- Canada: Contribution to the General Fund: **US\$970,606.61**.
- U.S.A.: Contribution to the General Fund: **US\$4,421,652.32** (subject to appropriations);
- U.S.A.: Contribution to the headquarters building lease and maintenance costs: **US\$458,608.60**.

The full recording of the AM101 is available at the following link: [IPHC-2025-AM101-Audio recording](#)

1. OPENING OF THE SESSION

1. The 101st Session of the International Pacific Halibut Commission (IPHC) Annual Meeting (AM101) was held in Vancouver, BC, Canada, from 27-31 January 2025. A total of 21 participants (6 Commissioners; Members; 15 advisors/experts) attended the Session from the two (2) Contracting Parties, as well as 165 members of the public (104 in-person and 61 remote). The list of 186 participants is provided at [Appendix I](#). The meeting was opened by the Vice-Chairperson, Mr Jon Kurland (U.S.A.), who welcomed participants.
2. The Commission **NOTED** that Mr Paul Ryall was replaced by Mr Mark Waddell as Head of Delegation for Canada on 8 January 2025, and thus Mr Ryall stepped down as Chairperson of the Commission. As per Rule 9 of the IPHC Rules of Procedure (2024), the Commission is required to elect a new Chairperson from Canada to serve until the close of the 101st Session of the IPHC Annual Meeting (AM101) on 31 January 2025.
3. **NOTING** Rule 9 of the IPHC Rules of Procedure (2024), the Vice-Chairperson **CALLED** for nominations for the newly vacated position of Chairperson of the IPHC until the close of the current session. Mr Mark Waddell (Canada) was nominated, seconded, and **ELECTED** as Chairperson of the IPHC until the close of AM101.
4. The Commission **ACKNOWLEDGED** and applauded Mr. Paul Ryall for his contributions as Commissioner to the IPHC over the last twelve years. Chairperson Waddell gave remarks regarding Mr. Paul Ryall recognizing his service to the IPHC during his tenure. Vice-Chairperson Kurland and Executive Director Wilson also provided remarks commending and thanking Mr Ryall.
5. The Commission **WELCOMED** Councillor [Howard Grant of the Musqueam Tribe](#), who provided the land recognition and welcomed participants to Vancouver.

2. ADOPTION OF THE AGENDA AND ARRANGEMENTS FOR THE SESSION

6. The Commission **ADOPTED** the Agenda as provided at [Appendix II](#). The documents provided to the AM101 are listed in [Appendix III](#).

3. IPHC PROCESS

3.1 *Update on actions arising from the 100th Session of the IPHC Annual Meeting (AM100), 2024 Special Sessions, Intersessional Decisions, and the 100th Session of the IPHC Interim Meeting (IM100)*

7. The Commission **NOTED** paper [IPHC-2025-AM101-03](#), that provided the Commission with an opportunity to consider the progress made during the inter-sessional period in relation to the direct requests for action by the Commission.
8. The Commission **AGREED** to consider and revise as necessary, the actions arising referenced in paper [IPHC-2025-AM101-03](#) along with any new actions arising from the AM101.
9. The Commission **RECALLED** the decision to move up to US\$1,000,000 from the IPHC Reserve Fund (Fund 50), to the IPHC FISS Fund (Fund 40) in 2025 to offset any potential deficit that may be incurred.

3.2 *Report of the IPHC Secretariat (2024)*

10. The Commission **NOTED** paper [IPHC-2025-AM101-04](#) that provided the Commission with a report on the activities of the IPHC Secretariat in 2024, not already contained within other papers before the Commission.
11. The Commission **NOTED** stakeholder requests that the Secretariat develop additional materials to raise awareness about the requirement introduced in 2024 for the U.S. commercial fishing fleet. This requirement mandates the submission of logbooks which were not previously collected by IPHC Fisheries Data Specialists (Field) in ports directly to the IPHC Secretariat headquarters within 30 days of the closing date of the commercial fishing period. The primary source of fleet updates are IPHC media releases, and this information was provided in [IPHC-2024-MR021](#). Additional reminders will be communicated over the coming months.

3.3 *2nd IPHC Performance Review (PRIPHC02): Implementation of recommendations*

12. The Commission **NOTED** paper [IPHC-2025-AM101-05](#) that provided the Commission with an update on the implementation of the recommendations arising from the 2nd Performance Review of the IPHC (PRIPHC02).
13. The Commission **AGREED** to continue to monitor progress on the implementation of the PRIPHC02 recommendations and determine at a later date when to initiate the next performance review. At this point in time the Commission does not see a need to initiate a third performance review.

3.4 *Reports of the IPHC Management Strategy Advisory Board*

14. The Commission **NOTED** the Reports of the 19th and 20th Sessions of the IPHC Management Strategy Advisory Board ([IPHC-2024-MSAB019-R](#) and [IPHC-2024-MSAB020-R](#)) that was presented by the Co-Chairpersons, Ms Gwyn Mason (Canada) and Mr Pete Hulson (USA).
15. The Commission **NOTED** that, between the 19th and 20th sessions of MSAB, the 4th Ad-Hoc meeting of the MSAB took place on 18 July 2024. The purpose of this Ad-Hoc meeting was for a subset of MSAB members to discuss MSE objectives and performance metrics ahead of the 20th Session of MSAB.
16. The Commission **CONSIDERED** the recommendations made by the MSAB in 2024 and **AGREED** to take them into consideration when deliberating on relevant agenda items throughout the meeting.

3.5 *Reports of the IPHC Scientific Review Board*

17. The Commission **NOTED** the Reports of the 24th and 25th Sessions of the IPHC Scientific Review Board ([IPHC-2024-SRB024-R](#); [IPHC-2024-SRB025-R](#)) that were presented by the Chairperson, Dr Sean Cox (Simon Fraser University, Vancouver, Canada).
18. The Commission **CONSIDERED** the recommendations made by the SRB in 2024 and **AGREED** to take them into consideration when deliberating on relevant agenda items throughout the AM101.

3.6 *Report of the 25th Session of the IPHC Research Advisory Board (RAB025)*

19. The Commission **NOTED** the Report of the 25th Session of the IPHC Research Advisory Board ([IPHC-2024-RAB025-R](#)) that was presented by the RAB Chairperson, Dr David T. Wilson.
20. The Commission **CONSIDERED** the recommendations made by the RAB in 2024 and **AGREED** to take them into consideration when deliberating on relevant agenda items throughout the AM101.
21. The Commission **REQUESTED** that additional Canadian membership beyond the two (2) current RAB members would be desirable and encouraged the Canadian delegation to explore recruiting new members from Canada.

3.7 *International Pacific Halibut Commission 5-Year Program of Integrated Research and Monitoring (2022-26)*

22. The Commission **NOTED** paper [IPHC-2025-AM101-06](#) that provided the Commission with an annual opportunity to comment and amend the IPHC's 5-year Program of Integrated Research and Monitoring (2022-26) (5YPIRM).
23. The Commission **NOTED** that at the request of the SRB (see below), the IPHC Secretariat will be updating the 5YPIRM throughout the course of 2025 with the intention of presenting a draft of the next 5YPIRM (2026-31) to the Commission at IM101 in November 2025.

SRB025–Rec.01 (para. 14) The SRB RECOMMENDED that the IPHC 5-year Program of Integrated Research and Monitoring be revised by SRB026 to reflect changing priorities in light of major progress on biological research and ongoing monitoring challenges.

SRB025–Rec.02 (para. 15) The SRB RECOMMENDED incorporating evaluation of new technologies into the 5-year Program of Integrated Research and Monitoring. Initial examples include:

- a) testing samples of AI-generated age compositions in the assessment model as soon as is practicable to determine their potential value for that purpose;*
- b) using AI to support ageing requirements for gene-tagging and/or CKMR [Close Kin Mark Recapture] methods to estimate abundance. These ages would be required beyond ageing workloads for normal assessment purposes;*
- c) epigenetic ageing (a new project beginning 2025), which could provide more reliable and unbiased ages than AI and perhaps comparable in precision to human-read ages.*

24. The Commission **NOTED** paper [IPHC-2025-AM101-INF03](#) that summarizes the information available on the use of artificial intelligence (AI) for determining the age of fish from images of collected otoliths and provides an update on the exploratory work of implementing an AI-based age determination model for Pacific halibut.

4. FISHERY MONITORING

4.1 Fishery-dependent data overview (2024)

4.1.1 Port Operations

25. The Commission **NOTED** paper [IPHC-2025-AM101-07](#) that provided an overview of the design and implementation of the IPHC Fishery-Dependent Data Collection Activities in 2024 – Port Operations.
26. The Commission **NOTED** the information provided by the IPHC Secretariat on the IPHC’s Directed Commercial Catch Sampling of Pacific halibut throughout the Convention Area, including rationale for selecting ports and desired biological sampling targets necessary for scientific validity as well as any suggestions for increasing efficiency and decreasing costs.
27. The Commission **NOTED** that current port sampling includes a subset of 10/43 ports in which Pacific halibut are landed. Further reductions in the number of ports or the duration of sampling in existing ports have the potential to introduce bias into the demographic information (age, length, weight, sex) due to differences in the temporal and geographical representation of fishing activity landed into each port. Further reduction in the number of ports or duration of sampling in existing ports would also delay logbook data containing commercial fishing effort from its use in the IPHC Pacific halibut stock assessment.
28. The Commission **NOTED** that the Secretariat has recently reduced the number of otoliths aged from ports where a statistical power analysis indicated that the information content of the data (effective sample size) could be maintained with the existing rates of trips sampled but fewer otoliths aged from each trip.
29. **NOTING** that the stock assessment is currently relying heavily on fishery dependent data in light of the limited footprint of the FISS in recent years, the Commission **AGREED** with the Secretariat’s recommendation not to further reduce sampling in the ports selected for sampling or the periods sampled in each port at this time.
30. The Commission **REQUESTED** an annual compilation of reports of comments received by the IPHC’s Fisheries Data Specialists (Field) on current harvesting conditions.

4.1.2 Fisheries Data

31. The Commission **NOTED** paper [IPHC-2025-AM101-08 Rev 1](#) that provided an overview of the 2024 Pacific halibut removals, including the status of mortality reported against fishery limits adopted by the Commission and outlined in the [IPHC Fishery Regulations \(2024\)](#). The total mortality in 2024 was estimated to be 86% of the coastwide TCEY, the lowest percentage reported in recent years.
32. The Commission **REQUESTED** that the description of data on non-directed discard mortality for IPHC Regulatory Areas 3A and 3B be updated to align with the information provided in [IPHC-2025-AM101-NR02](#)

[Rev_1](#). (Note: A Rev_2 of this paper was published on 30 January 2025 to accommodate this request in-session: [IPHC-2025-AM101-08 Rev_2](#)).

4.2 *Fishery-independent data overview (2024)*

4.2.1 *IPHC Fishery-Independent Setline Survey (FISS) design and implementation in 2024*

- 33. The Commission **NOTED** paper [IPHC-2025-AM101-09](#) that provided an overview of the IPHC’s FISS design and implementation in 2024.
- 34. The Commission **RECALLED** that the IPHC’s FISS consists of a standard grid totalling 1,890 stations (Fig. 1), within the prescribed depth range of 18 to 732 metres (10 to 400 fathoms).
- 35. The Commission **RECALLED** that the 2024 FISS design was endorsed via and intersessional decision on 15 February 2024 ([IPHC-2024-CR-008](#)), that included 525 stations coastwise (Fig. 2).

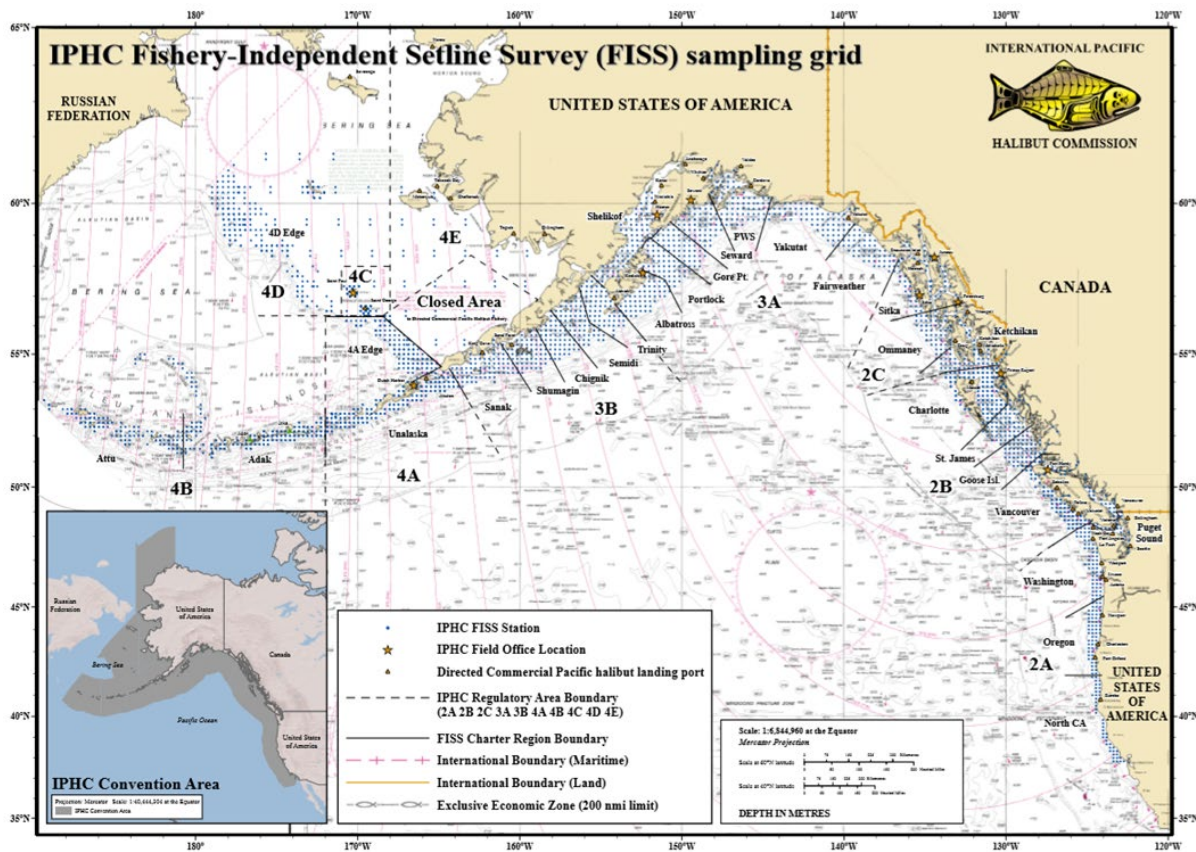


Figure 1. IPHC Fishery-Independent Setline Survey (FISS) with full sampling grid shown.

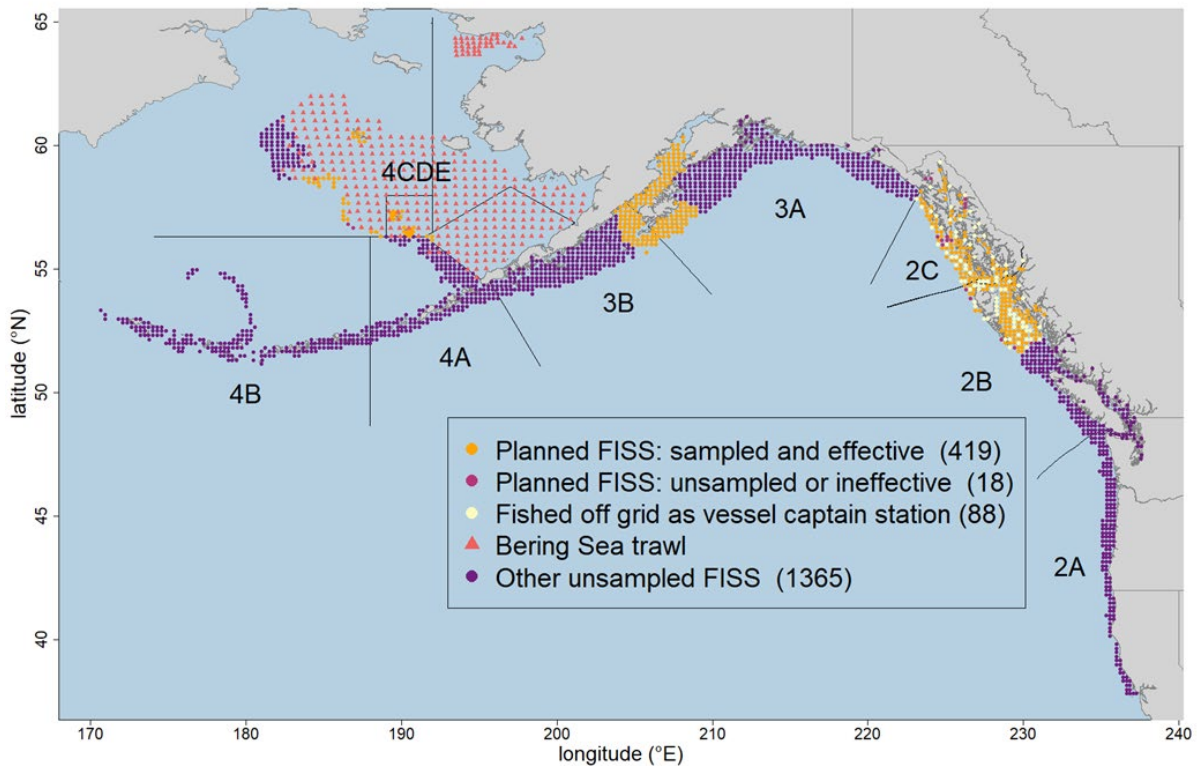


Figure 2. Map of the 2024 FISS design endorsed by the Commission on 15 February 2024 ([IPHC-2024- CR-008](#)). Ineffective and planned unsampled stations are identified with red circles, while purple circles were not to be sampled in 2024.

36. The Commission **NOTED** that the interactive views of the 2024 FISS results (including all prior years) were made publicly available via the IPHC website on 31 October 2024: <https://www.iphc.int/data/setline-survey-catch-per-unit-effort>.

37. The Commission **NOTED** that:

- a) Not sampled: A total of three (3) initially planned stations were not sampled in 2024. Two stations in the Sitka charter region were unsampled as they were within Glacier Bay National Park, and we were not permitted to complete these stations within the park this year. There was also one station in the St James charter region that was unsampled as it was located in the Hecate Marine Protected Area.
- b) Ineffective stations: Coastwide, fifteen (15) stations were deemed ineffective due to orca depredation (n=2), sperm whale depredation (n=9), sand fleas (n=3), and setting and gear issues (n=1) ([Fig. 2](#)). The number of ineffective stations due to sand fleas was higher in 2024 than in recent years.

5. STOCK STATUS OF PACIFIC HALIBUT (2024)

5.1 *Space-time modelling of survey data*

38. The Commission **NOTED** paper [IPHC-2025-AM101-10](#) that provided the results of the space-time modelling of Pacific halibut survey data for the period 1993-2024.

39. The Commission **NOTED** [Fig. 3](#) that shows the time series estimates of O32 weight per unit effort (WPUE) (most comparable to fishery catch-rates) over the 1993-2024 period included in the 2024 space-time modelling. Coastwide, there is an estimated decline in the index since 2023 of 9% (95% credible interval: -17% to -1%), largely due to a 19% estimated decline in IPHC Biological Region 3.

40. The Commission **NOTED** that there was evidence that inclusion of data from vessel captain stations in the modelling would lead to biased estimates and that these data were excluded from the final model results to avoid such bias.

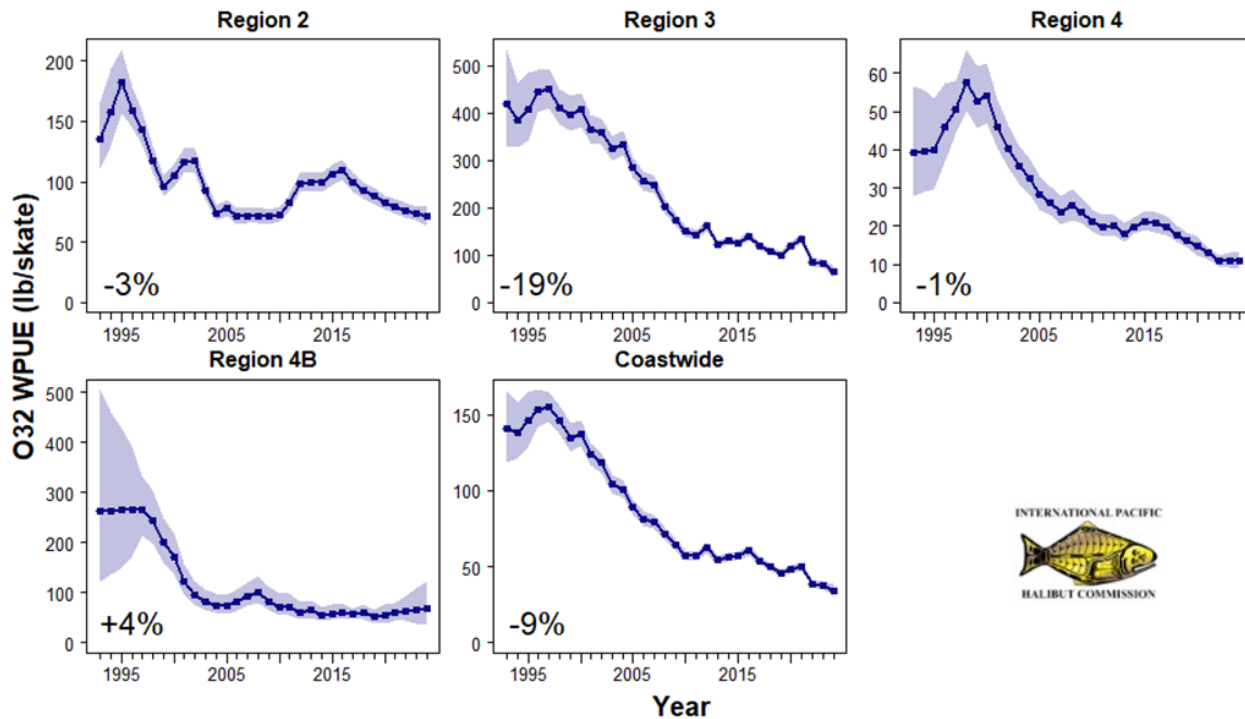


Figure 3. Space-time model output for O32 WPUE for 1993-2024 for Biological Regions. Filled circles denote the posterior means of O32 WPUE for each year. Shaded regions show posterior 95% credible intervals, which provide a measure of uncertainty: the wider the shaded interval, the greater the uncertainty in the estimate. Numeric values in the lower left-hand corners are estimates of the change in mean O32 WPUE from 2023 to 2024.

5.2 Stock Assessment: Data overview and stock assessment (2024)

41. The Commission **NOTED** paper [IPHC-2025-AM101-11](#), that provided the Commission with a summary of the data, stock assessment at the end of 2024.

42. The Commission **NOTED** that:

- the 2024 stock assessment represents a second update, following the full assessment conducted in 2022;
- there are no structural changes to the assessment methods for 2024;
- For the second year in a row, the most influential source of new information in this assessment was the directed commercial fishery logbook trend, including the updated (and lower) 2023 estimate as well as the estimate of the catch-rate in 2024. With all data sources included, the estimate of spawning biomass in 2024 resulted in a 17% decrease as compared to the projected 2024 spawning biomass estimated in the 2023 stock assessment. This is partly a result of the decline in the 2024 fishery WPUE and a lower 2023 fishery WPUE when adding additional logbooks to the analysis this year. Although differences in trend between the FISS and commercial fishery are not uncommon in the historical time-series, the sensitivity of this and last year's assessment to these data highlights the importance of both time-series in estimating the stock size and trend.

43. The Commission **NOTED** concerns about the continued and increasing reliance on commercial fishery logbook information to inform the stock assessment, particularly from areas that have not been sampled by the FISS in several years, and the bias this may introduce to the results.

44. The Commission **NOTED** that the IPHC’s interim management procedure specifies a reference level of fishing intensity of F43% (SPR=43%); this equates to the level of fishing that would reduce the lifetime spawning output per recruit to 43% of the unfished level given current biology, fishery characteristics and demographics. The historical time-series of fishing intensity is estimated to have peaked in the period from 2004-2011. The 2024 fishing intensity is estimated to be F49% (credible interval: 30-64% ([Table 1](#)), below both the current and previous (F46%) reference levels and the value estimated for 2023 (47%). Comparing the relative spawning biomass and fishing intensity over the recent historical period shows that the relative spawning biomass decreased as fishing intensity increased through 2010, then subsequently increased as fishing intensity was reduced ([Fig. 4](#)).

Table 1. Status summary of the Pacific halibut stock and fishery in the IPHC Convention Area at beginning of 2025.

Indicators	Values	Trends	Status
<i>BIOLOGICAL</i>			
SPR ₂₀₂₄ : P(SPR<43%): P(SPR<limit):	49% (30-64%) ² 33% LIMIT NOT SPECIFIED	FISHING INTENSITY DECREASED FROM 2023 TO 2024	FISHING INTENSITY BELOW REFERENCE LEVEL ³
SB ₂₀₂₅ (MLBS): SB ₂₀₂₅ /SB ₀ : P(SB ₂₀₂₅ <SB ₃₀): P(SB ₂₀₂₅ <SB ₂₀):	149 (97–216) Mlbs 38% (18-55%) 30% 11%	SB INCREASED 3% FROM 2024 TO 2025	NOT OVERFISHED ⁴
Biological stock distribution:	SEE TABLES AND FIGURES	REGION 3 DECREASED, REGION 2 INCREASED FROM 2023 TO 2024	REGION 3 AT THE LOWEST OBSERVED PROPORTION
<i>FISHERY CONTEXT</i>			
Total mortality 2024: Percent retained 2024: Average mortality 2020-24:	32.70 Mlbs, 14,832 t ¹ 83% 35.66 Mlbs, 16,174 t	MORTALITY DECREASED FROM 2023 TO 2024	2024 MORTALITY AT 100-YEAR LOW

¹ Weights in this document are reported as ‘net’ weights, head and guts removed; this is approximately 75% of the round (wet) weight.

² Ranges denote approximate 95% credible intervals from the stock assessment ensemble.

³ Status determined relative to the IPHC’s interim reference Spawning Potential Ratio level of 43%.

⁴ Status determined relative to the IPHC’s interim management procedure biomass limit of SB_{20%}.

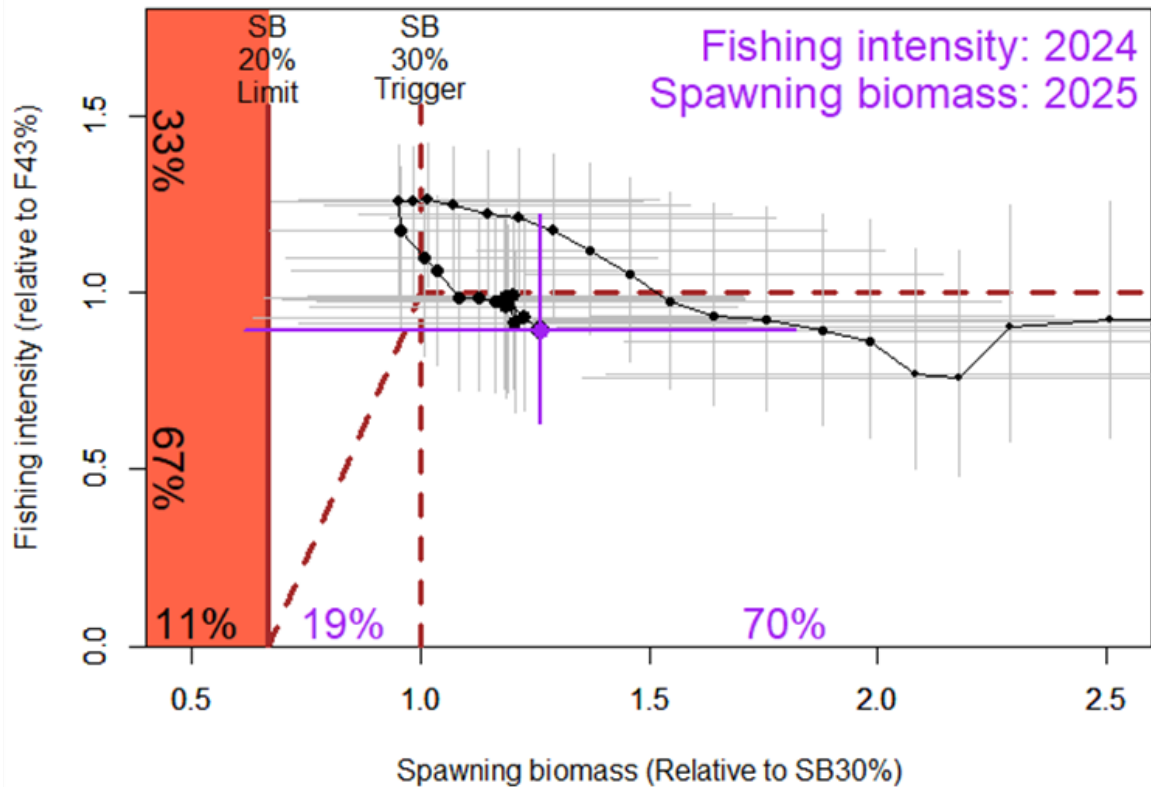


Figure 4. Phase plot showing the estimated time-series (1992-2025) of spawning biomass and fishing intensity relative to the reference points specified in the IPHC's interim management procedure. Dashed lines indicate the current F43% (horizontal) reference fishing intensity, with linear reduction below the SB30% (vertical) trigger, the red area indicates relative spawning biomass levels below the SB20% limit. Each year of the time series is denoted by a solid point (credible intervals by horizontal and vertical whiskers), with the relative fishing intensity in 2024 and spawning biomass at the beginning of 2025 shown as the largest point (purple). Percentages along the y-axis indicate the probability of being above and below F43% in 2024; percentages on the x-axis the probabilities of being below SB20%, between SB20% and SB30% and above SB30% at the beginning of 2025.

45. The Commission **NOTED** the following scientific advice from the IPHC Secretariat (table and figure references are those in paper [IPHC-2025-AM101-11](#)):

- Sources of mortality:** In 2024, total Pacific mortality due to fishing decreased to 32.70 million pounds (14,832 t), below the 5-year average of 35.66 million pounds (16,174 t) and representing the lowest value in over 100 years, due to a TCEY reduction of 4.6% from 2023 to 2024. Of that total mortality, 83% was retained and utilized in one of the fishery sectors (Table 2); this was below to the percent utilized in 2023 (84%) and equal to that observed in 2022.
- Fishing intensity:** The 2024 fishing mortality corresponded to a point estimate of SPR = 49%; there is a 33% chance that fishing intensity exceeded the IPHC's current reference level of F43% (Table 2). The Commission does not currently have a coastwide fishing intensity limit reference point.
- Stock status (spawning biomass):** Current (beginning of 2025) female spawning biomass is estimated to be 149 million pounds (67,500 t), which corresponds to a 30% chance of being below the IPHC trigger reference point of SB30%, and an 11% chance of being below the IPHC limit reference point of SB20%. The stock is estimated to have declined 32% from 2016 to 2024, then increased by 3% to the beginning of 2025. The relative spawning biomass (compared to the biomass projected to be present at the beginning of 2025 in the absence of any fishing) is currently estimated to be 38%, after reaching the lowest point in the recent time series (28%) in 2011. Therefore, the stock is considered to be 'not overfished'.

- d) **Stock distribution:** *After increases in 2020-2021, the proportion of the coastwide stock represented by Biological Region 3 has decreased in 2022-24 to the lowest estimate in the time-series, (Figure 6, Table 1). This trend occurs in tandem with increases in Biological Region 2. The lack of FISS sampling in Biological Region 4B in 2023-24 has resulted in increased uncertainty in both the trend and scale of the stock distribution in this Region.*
- e) **Additional risks not included in this analysis:** *Directed commercial fishery catch rates coastwide, and in nearly all IPHC Regulatory Areas were at or near the lowest observed in the last 40 years. The absolute level of spawning biomass is also estimated to be near the lowest observed since the 1970s. The directed commercial fishery transitioned from the 2005 year-class to the 2012 year-class in 2022, with the 2012 year-class again the most numerous in the landed catch in 2023-24. This shift from older to younger (and smaller fish) has contributed to observed reduced catch rates. The current spawning stock is heavily reliant on the 2012 and now 2016 year-classes. Environmental conditions continue to be unpredictable, with important deviations from historical patterns in both oceanographic and biological processes observed across the stock range in the last decade.*

6. MANAGEMENT STRATEGY EVALUATION

6.1 IPHC Management Strategy Evaluation: update

46. The Commission **NOTED** paper [IPHC-2025-AM101-12](#) that provided an update on Management Strategy Evaluation (MSE) progress in 2024 (including exceptional circumstances; goals and objectives; evaluating assessment frequency, a constraint and fishing intensity; and investigating the effects of reduced FISS designs), and work supporting the development of the Harvest Strategy Policy (HSP), and to provide a path forward to adopt a HSP in 2025 ([IPHC-2025-AM101-17](#)).
47. The Commission **NOTED** the recommendation from the Secretariat to add a measurable objective related to absolute female spawning biomass under the general objective 2.1 “maintain spawning biomass at or above a level that optimizes fishing activities” to be included in the priority Commission objectives after the current biomass threshold (B36%) objective and reporting a performance metric showing the probability that the short-term spawning biomass is less than the estimated spawning biomass in 2023. A potential new measurable objective could be to maintain the short-term absolute spawning biomass above the estimated spawning biomass in 2023 with at least a 1 in 3 chance.
48. The Commission **NOTED** that optimising yield remains a general objective of the Commission and that the MSAB recommended to redefine the measurable objective “optimise yield” to “maximise yield” while evaluating this measurable objective equally with the measurable objective to minimise interannual variability in yield.
49. The Commission **NOTED** the Secretariat’s advice to include the following priority objectives, that are hierarchical in nature, in the draft Harvest Strategy Policy:
- Maintain the long-term coastwide female relative spawning biomass above a biomass limit reference point (B20%) at least 95% of the time.
 - Maintain the long-term coastwide female relative spawning biomass at or above a biomass reference point (B36%) at least 50% of the time.
 - Given that a) – b) are met:
 - Maximise average coastwide TCEY; and
 - Limit annual changes in the coastwide TCEY.
50. The Commission **NOTED** that MSE simulations showed optimistic short-term TCEYs, and because Pacific halibut are currently experiencing low productivity, **NOTED** the Secretariat’s recommendation to conduct MSE simulations for different productivity assumptions to further understand environmental and fishing effects on the population and fisheries.

51. The Commission **NOTED** the Secretariat’s advice to continue conducting an annual stock assessment to determine the reference TCEY using an SPR of 43% for management advice, while also presenting the reference TCEY determined from an empirical management procedure using the proportional change in the FISS O32 WPUE without a stock assessment as could be used with a triennial stock assessment frequency.
52. The Commission **NOTED** the recommendations from the Secretariat as follows:
- a) updating the current interim reference MP with a new SPR value of 46% (currently 43%);
 - b) furthering MSE work to support modifications to the management procedure determining the reference coastwide TCEY and updates to the harvest strategy policy;
 - c) further MSE analyses to evaluate FISS designs and methods to present outcomes of these analyses.
53. The Commission **REQUESTED** that the Secretariat facilitate informal intersessional workshops, consisting of Commissioners and key advisors, to review and consider the draft Harvest Strategy Policy, for adoption in mid-to-late 2025.

7. HARVEST DECISION TABLE 2025

7.1 Stock projections and harvest decision table 2025-2027

54. The Commission **NOTED** paper [IPHC-2025-AM101-13](#) that provided the Commission with short-term (3 year) stock projections and the harvest decision table for 2025-2027.
55. The Commission **NOTED** the following outlook for the stock provided by the IPHC Secretariat:

*“**Outlook.** Projections indicate that the spawning biomass would increase in the absence of any fishing mortality, with risks of stock decline over one and three years both less than 1/100 ([Table 2](#), [Figure 5](#)). At the status quo coastwide TCEY (35.28 million pounds), risks of stock decrease over one and three years are 43/100 and 45/100 [respectively]. For all harvest levels that exceed the three-year surplus (37.4 million pounds) risks of stock decline are larger than 50/100, and reaching 88/100 for the coastwide TCEY that is projected to correspond to the F35% MSY proxy harvest level in 2025. Alternative harvest levels around the status quo (+/- 5 and 10%) are projected to result in levels of fishing intensity ranging from F50% to F44%, similar to those estimated in recent years. For larger reductions to the status quo (-15% and -25%) risk of one year stock decrease drops to 26/100 and 16/100 respectively. The alternatives around the status quo span a range of stock trajectories from increasing (all alternatives up to the status quo) to decreasing (status quo +10%). At the reference level of fishing mortality (F43%) the 2025 coastwide TCEY is projected to be 39.8 million pounds (41.7 million pounds of total mortality including U26 non-directed discard mortality). Stock decline over the next three years is projected to be likely (57/100 to 58/100) at this level of fishing intensity. The probability of a reduction in the coastwide TCEY in order to maintain a fishing intensity no greater than F43% over the next three years is projected to be 49/100.*”

Table 2. Harvest decision table for 2025-2027 mortality limits. Columns correspond to yield alternatives and rows to risk metrics. Values in the table represent the probability, in “times out of 100” (or percent chance) of a particular risk.

2025 Alternative				Status quo -25%	Status quo -15%	Status quo -10%	Status quo -5%	Status quo	F _{46%}	3-Year Surplus	Status quo +10%	Reference F _{43%}	MEY proxy	MSY proxy	
Total mortality (M lb)	0.0	21.8		28.3	31.8	33.6	35.4	37.1	37.8	39.0	40.7	41.7	46.1	55.1	
TCEY (M lb)	0.0	20.0		26.5	30.0	31.8	33.5	35.3	35.9	37.2	38.8	39.8	44.3	53.2	
2025 fishing intensity	F _{100%}	F _{63%}		F _{55%}	F _{51%}	F _{50%}	F _{48%}	F _{47%}	F _{46%}	F _{45%}	F _{44%}	F _{43%}	F _{40%}	F _{35%}	
Fishing intensity interval	--	41-75%		33-69%	30-66%	28-65%	27-63%	26-62%	25-62%	25-61%	24-60%	23-59%	21-56%	17-51%	
Stock Trend (spawning biomass)	in 2026	is less than 2025	<1	5	16	26	31	37	43	45	49	54	57	70	88
		is 5% less than 2025	<1	<1	2	4	6	8	11	12	14	17	19	29	50
	in 2027	is less than 2025	<1	7	21	30	35	40	45	47	50	55	58	69	86
		is 5% less than 2025	<1	2	8	14	18	22	26	27	30	34	37	48	70
	in 2028	is less than 2025	<1	8	20	30	35	40	45	47	50	55	58	70	87
		is 5% less than 2025	<1	3	11	18	22	26	30	32	36	40	43	55	77
Stock Status (Spawning biomass)	in 2026	is less than 30%	26	26	27	27	27	27	27	27	28	28	28	28	29
		is less than 20%	1	5	7	8	9	10	10	11	11	12	12	14	18
	in 2027	is less than 30%	25	25	26	26	26	26	26	26	26	26	26	27	28
		is less than 20%	<1	2	4	6	7	8	9	9	10	11	12	15	20
	in 2028	is less than 30%	17	25	25	25	26	26	26	26	26	26	26	27	28
		is less than 20%	<1	1	3	5	6	7	8	9	10	11	12	16	21
Fishery Trend (TCEY)	in 2026	is less than 2025	0	7	24	28	31	34	38	39	42	46	49	60	80
		is 10% less than 2025	0	4	22	26	27	29	32	33	35	38	39	48	67
	in 2027	is less than 2025	0	6	23	27	30	33	37	38	41	46	48	60	81
		is 10% less than 2025	0	4	20	25	27	29	31	32	34	37	39	49	69
	in 2028	is less than 2025	0	5	21	26	29	33	37	38	41	46	49	61	82
		is 10% less than 2025	0	3	18	23	26	28	31	32	34	37	40	50	71
Fishery Status (Fishing intensity)	in 2025	is above F _{43%}	0	7	25	29	32	35	39	41	44	47	50	59	78

Terms: *Constant Exploitation Yield (CEY)*: A specific concept from the IPHC's interim management procedure: the Total CEY (TCEY) is the current basis for Commission mortality limits. TCEY includes all sources and sizes of mortality, except discard mortality in non-directed fisheries less than 26 inches in length (66cm; U26). The Fishery CEY (FCEY) is the amount of yield for directed Pacific halibut fisheries as defined by IPHC Regulatory Area-specific catch agreements, where applicable. *Spawning Potential Ratio (SPR)*: A commonly used metric of fishing intensity. SPR is the ratio of the equilibrium spawning biomass per recruit given some level of fishing and the equilibrium spawning biomass per recruit in the absence of fishing. Sometimes referred to as SBR, relative Spawning Biomass per Recruit.

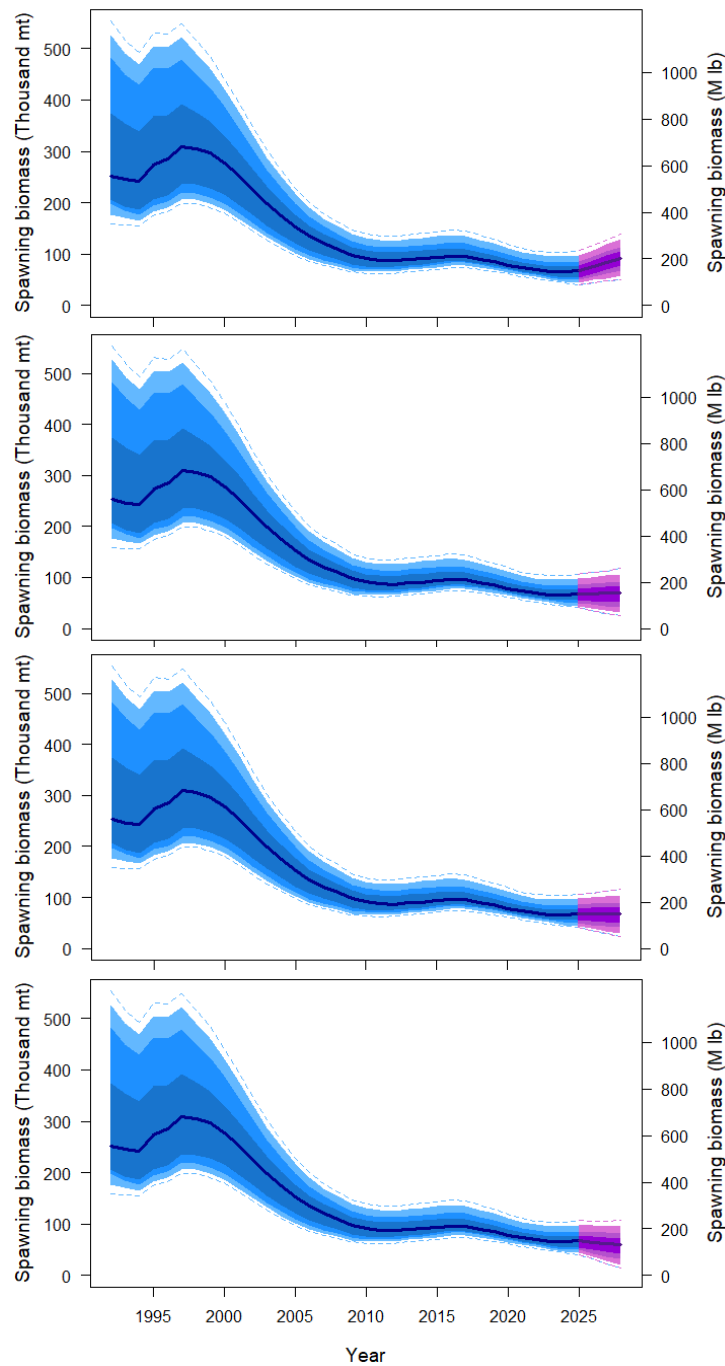


Figure 5. Three-year projections of stock trend under alternative levels of mortality corresponding to various reference points: no fishing mortality (upper panel), the 3-year surplus (37.2 million pounds; second panel), and the TCEY projected for the $F_{43\%}$ reference level of fishing intensity (39.8 million pounds, third panel) and the TCEY projected for the $F_{35\%}$ MSY proxy level of fishing intensity (53.2 million pounds, bottom panel).

7.2 Pacific halibut mortality projections using the IPHC mortality projection tool (2025)

56. The Commission **NOTED** paper [IPHC-2025-AM101-INF02](https://www.iphc.int/data/projection-tool) that provided an updated description of the IPHC's web-based mortality projection tool (<https://www.iphc.int/data/projection-tool>) for setting mortality limits in 2025. This tool provides all user groups the ability to create alternative projection tables as necessary for discussion and decision-making.

57. The Commission **NOTED** the historical TCEY decisions as provided in [Table 3](#).

Table 3. Recent adopted TCEYs by IPHC Regulatory Area and coastwide (million pounds net).

Year	2A	2B	2C	3A	3B	4A	4B	4CDE	Total
2013	1.11	7.78	5.02	17.07	5.87	2.43	1.93	4.28	45.48
2014	1.11	7.64	5.47	12.05	3.73	1.56	1.49	3.58	36.65
2015	1.06	7.91	6.20	13.00	3.72	1.96	1.53	4.27	39.63
2016	1.26	8.24	6.54	12.75	3.41	1.95	1.37	4.07	39.59
2017	1.47	8.32	7.04	12.96	3.98	1.80	1.34	3.84	40.74
2018	1.32	7.10	6.34	12.54	3.27	1.74	1.28	3.62	37.21
2019	1.65	6.83	6.34	13.50	2.90	1.94	1.45	4.00	38.61
2020	1.65	6.83	5.85	12.20	3.12	1.75	1.31	3.90	36.60
2021	1.65	7.00	5.80	14.00	3.12	2.05	1.40	3.98	39.00
2022	1.65	7.56	5.91	14.55	3.90	2.10	1.45	4.10	41.22
2023	1.65	6.78	5.85	12.08	3.67	1.73	1.36	3.85	36.97
2024	1.65	6.47	5.79	11.36	3.45	1.61	1.25	3.70	35.28

58. The Commission **RECALLED** that the Pacific halibut mortality projections for 2025 continue to be the three-year average of non-directed discard estimates (bycatch) as adjusting directed fishery limits to account for full regulatory attainment of non-directed discards in the U.S.A. and Canada would result in reduced directed fishery values (as reported in the mortality projection tool).

8. FISS DESIGN EVALUATIONS 2025-2029

8.1 2025-29 FISS design evaluation

59. The Commission **NOTED** paper [IPHC-2025-AM101-14](#) that provided an optimal long-term FISS design, the approved 2025 FISS design, and discussed the potential for biases that may result from non-optimal FISS designs.

60. The Commission **RECALLED** that the primary purpose of the annual FISS is to sample Pacific halibut to provide data for the stock assessment (abundance indices, biological data) and estimates of stock distribution to inform spatial management decisions. The priority of the current rationalised FISS is therefore to maintain or enhance data quality (precision and bias) by establishing baseline sampling requirements in terms of station count, station distribution and skates per station. Potential considerations that could add to or modify the design are logistics and cost (secondary design layer), and FISS removals (impact on the stock), data collection assistance for other agencies, and IPHC policies (tertiary design layer).

61. The Commission **AGREED** to updated priorities for the FISS as outlined in [Table 4](#).

Table 4. Prioritization of FISS objectives and corresponding design layers.

Priority	Objective	Design Layer
Primary	Sample Pacific halibut for stock assessment and stock distribution estimation.	Minimum sampling requirements in terms of: <ul style="list-style-type: none"> • Station distribution; • Station count; • Skates per station.
Secondary	Cost effectiveness without compromising the scientific integrity of the FISS design.	Logistics, cost, scientific integrity: operational feasibility and cost/revenue, and scientific needs. With an aspirational target reserve of US\$2,000,000
Tertiary	Minimize removals, and assist others where feasible on a cost-recovery basis.	Removals: minimize impact on the stock while meeting primary priority; Assist: assist others to collect data on a cost-recovery basis; IPHC policies: ad-hoc decisions of the Commission regarding the FISS design.

62. The Commission **NOTED** that the FISS sampling provides key information for stock assessment and management, including:
- Coastwide and Biological Region-specific trends in numbers and biomass;
 - Demographic data, including length, age, sex and individual weights;
 - Distributional estimates by Biological Region and IPHC Regulatory Area.
63. The Commission **NOTED** the importance of broad spatial coverage across Biological Regions, IPHC Regulatory Areas, and key habitats within Regulatory Areas in order to ensure that fishery-independent information from the FISS leads to estimates with minimal bias.
64. The Commission **NOTED** the Secretariat’s advice that:
- FISS sampling designs should not be based only on a target CV ranges, but should include consideration of potential bias, where large contiguous areas may not be annually sampled, as well as comprehensive and representative sampling of biological data to ensure that trends are interpreted accurately with regard to year-class strengths and size-at-age.
 - target CV ranges and sampling in general should include greater precision for the core areas of the stock (e.g. a CV of no more than 5%), in order to prioritize information from areas that have the greatest influence on coastwide trends and could have lower precision (e.g. a CV of 15-25%) in IPHC Regulatory Areas at the edges of the range.
65. The Commission **RECALLED** that following the 14th Special Session of the Commission (SS014; [IPHC-2024-SS014-R](#)), the Commission adopted a 2025 FISS design via an intersessional decision-making process ([IPHC-2024-CR-030](#) and [IPHC-2024-CR-031](#)) as provided at [Fig. 6](#), that balances the Commission’s primary and secondary objectives for the FISS.

IPHC-2024-ID009: *The Commission RECOMMENDED the 2025 FISS design as shown in Figure 1 (of IPHC-Circular 2024-30, Appendix I), involving sampling 517 stations in four (4) biological regions, seven (7) IPHC Regulatory Areas, and ten (10) charter regions.*

IPHC-2024-ID010: *The Commission APPROVED the transfer of US\$1,000,000 from IPHC Fund 50 – Reserve, to IPHC Fund 40 – FISS for use in FY2025.*

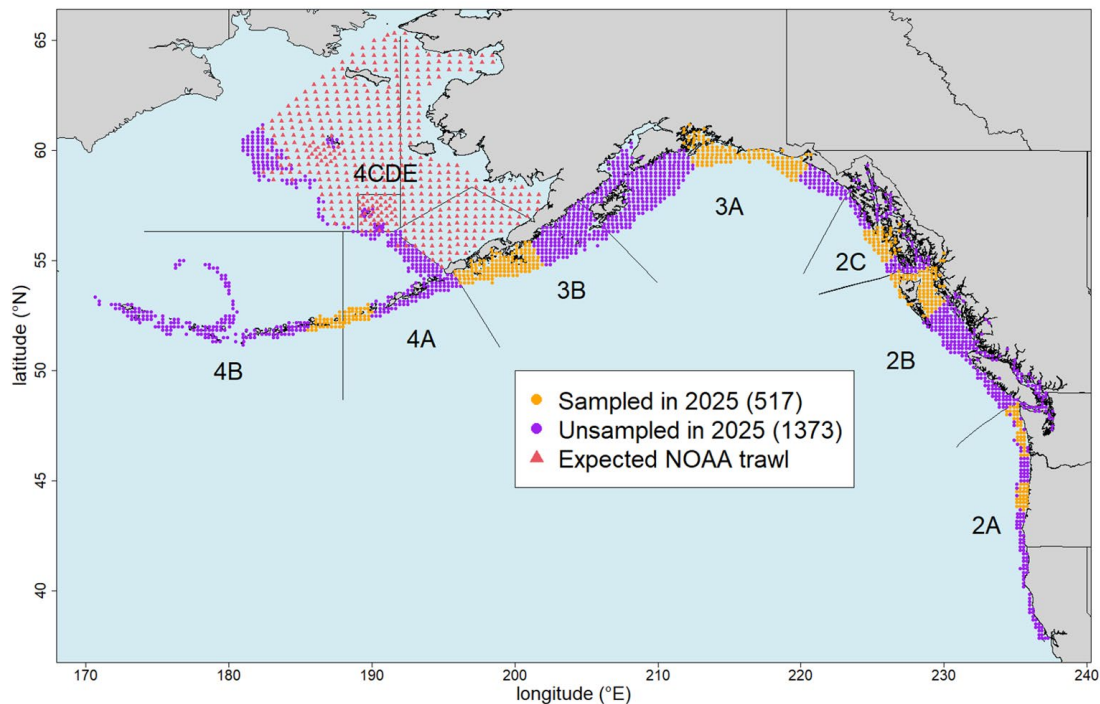


Figure 6. The approved 2025 FISS design (orange circles).

66. The Commission **RECALLED** that supplementary funding is needed to sustain the FISS, at least in the near-term, and **AGREED** to continue to explore options for funding, e.g. from Contracting Parties and/or external partners.
67. The Commission **NOTED** that the use of the Base Block Design will be the focus of future planning and annual FISS proposals from the Secretariat.
68. The Commission **NOTED** that recent reductions in the FISS design will require several years of the Base Block Design or greater sampling effort to reduce uncertainty and potential for bias to levels consistent with historical FISS standards.

FISS bid specifications and tenders

69. The Commission **NOTED** that the IPHC Secretariat is soliciting tenders for the 2025 FISS (released 13 December 2024 ([IPHC-2024-MR022](#)), with tenders due by 3 February 2025), and that tender specifications incorporated standard wording for amendments that the Commission may make at any time prior to the FISS season commencing. The Secretariat welcomes bids from both fixed-gear and snap-gear vessels. The tender process follows standard U.S. General Services Administration (GSA) guidelines and is available on the IPHC website for transparency and accountability purposes.
70. The Commission **NOTED** that the final endorsed FISS design for 2025 may undergo further modification depending on the outcome of the tender bid process, as well as any unforeseen in-season logistical issues that IPHC contracted vessels encounter throughout 2025 (e.g. weather, mechanical issues, etc.).

9. BIOLOGICAL AND ECOSYSTEM SCIENCES – PROJECT UPDATES

9.1 Report on current and future biological and ecosystem science research activities

71. The Commission **NOTED** paper [IPHC-2025-AM101-15](#) that provided a description of the biological and ecosystem science research projects conducted and planned by the IPHC Secretariat and contemplated within the Five-Year Program of Integrated Research and Monitoring (2022-2026).
72. The Commission **NOTED** that the primary biological research activities at IPHC that follow Commission objectives are identified and described in the IPHC Five-Year Program of Integrated Research and Monitoring (2022-2026). These activities are summarized in five broad research areas designed to provide inputs into stock assessment and the MSE processes, as follows:
- a) **Migration and Population Dynamics.** Studies are aimed at improving current knowledge of Pacific halibut migration and population dynamics throughout all life stages in order to achieve a complete understanding of stock structure and distribution across the entire distribution range of Pacific halibut in the North Pacific Ocean and the biotic and abiotic factors that influence it.
 - b) **Reproduction.** Studies are aimed at providing information on the sex ratio of the commercial catch and to improve current estimates of maturity.
 - c) **Growth.** Studies are aimed at describing the role of factors responsible for the observed changes in size-at-age and at evaluating growth and physiological condition in Pacific halibut.
 - d) **Mortality and Survival Assessment.** Studies are aimed at providing updated estimates of discard mortality rates in the guided recreational fisheries and at evaluating methods for reducing mortality of Pacific halibut.
 - e) **Fishing Technology.** Studies are aimed at developing methods that involve modifications of fishing gear with the purpose of reducing Pacific halibut mortality due to depredation and bycatch.

73. The Commission **NOTED** the progress made in understanding genetic population structure and in updating maturity schedules coastwide. Specifically:
- identifying that Pacific halibut in IPHC Convention Waters are from a single genetic population, which is consistent with current IPHC stock assessment practice of modelling Pacific halibut as a single coastwide stock;
 - updating coastwide maturity-at-age relationships for use in the 2025 full stock assessment.

10. IPHC FISHERY REGULATIONS: PROPOSALS FOR THE 2024-25 PROCESS

10.1 IPHC Secretariat fishery regulation proposals

74. The Commission **NOTED** paper [IPHC-2025-AM101-16 Rev 1](#) that provided an overview of the IPHC Fishery Regulations proposals that the IPHC Secretariat, Contracting Parties, and other stakeholders have submitted for consideration at the AM101.

10.1.1 IPHC Fishery Regulations: Mortality and Fishery Limits (Sect. 5)

75. The Commission **ADOPTED** fishery regulation proposal [IPHC-2025-AM101-PropA1](#), that provided the mortality and fishery limits framework for population at the AM101 ([Appendix IV](#)). [CAN/USA: Unanimous]
76. The Commission **ADOPTED** the distributed mortality limits for each Contracting Party, by IPHC Regulatory Area ([Table 5](#)), and sector, as provided for in [Appendix IV](#). [CAN/USA: Unanimous]
77. The Commission **NOTED** that the adopted mortality limits for 2025 correspond to a 25% probability of stock decline through 2026, and a 29% probability of stock decline through 2028.
78. The Commission **NOTED** that the adopted mortality limits for 2025 correspond to a fishing intensity of F51%, lower than the fishing intensity estimate for 2024.
79. The Commission **NOTED** that the adopted mortality limits for each Contracting Party represent a 15.8% decrease from 2024.

Table 5. Adopted TCEY mortality limits for 2025

Contracting Party IPHC Regulatory Area	Mortality limit (TCEY) (metric tonnes)	Mortality limit (TCEY) (mlbs)
Canada Total: 2B	2,472.08	5.45
USA: 2A	748.43	1.65
USA: 2C	2,367.75	5.22
USA: 3A	4,118.62	9.08
USA: 3B	1,297.27	2.86
USA: 4A	607.81	1.34
USA: 4B	471.74	1.04
USA: 4CDE	1,397.06	3.08
United States of America Total	11,008.68	24.27
Total (IPHC Convention Area)	13,480.75	29.72

80. The Commission **NOTED** that the FCEY values resulting from the adopted TCEY mortality limits, listed in [Appendix IV](#), are used by the Contracting Parties to determine fishery sector allocations, recognizing that each Contracting Party may implement more restrictive limits. The detailed projections by sector are provided in [Table 6](#).

Table 6. Detailed 2025 projections, by sector, based on the adopted TCEY mortality limits from [Table 5](#) (IPHC Regulatory Area).

	Sector	IPHC Regulatory Area								
		2A	2B	2C	3A	3B	4A	4B	4CDE	Total
1	Non-FCEY commercial discards	0.06	0.15	NA	NA	0.20	0.04	0.01	0.04	0.51
2	Non-FCEY O26 Non-directed discards	0.06	0.31	0.05	0.26	0.17	0.29	0.13	1.41	2.69
3	Non-FCEY recreational	NA	0.03	1.01	0.88	0.00	0.01	0.00	0.00	1.93
4	Non-FCEY subsistence	NA	0.41	0.25	0.12	0.01	0.00	0.00	0.01	0.81
5	Total Non-FCEY	0.13	0.90	1.31	1.26	0.39	0.34	0.14	1.47	5.93
6	Commercial discards	NA	NA	0.12	0.45	NA	NA	NA	NA	0.57
7	Recreational	0.62	0.68	0.72	1.48	NA	NA	NA	NA	3.49
8	Subsistence	0.02	NA	NA	NA	NA	NA	NA	NA	0.02
9	Commercial landings	0.89	3.87	3.07	5.89	2.47	1.00	0.90	1.61	19.71
10	Total FCEY	1.53	4.55	3.91	7.82	2.47	1.00	0.90	1.61	23.79
								4C FCEY	0.75	
								4D FCEY	0.75	
								4E FCEY	0.12	
	TCEY	1.65	5.45	5.22	9.08	2.86	1.34	1.04	3.08	29.72
	U26 Non-directed discards	0.01	0.04	0.00	0.25	0.11	0.13	0.01	1.35	1.90
	Total	1.66	5.49	5.22	9.33	2.97	1.47	1.05	4.43	31.62

1st row: Commercial discards include all discard mortality estimated due to the 32" minimum size limit, lost gear, and legal-sized discards associated with quota attainment. Estimates not included in the FCEY due to the IPHC Regulatory Area Catch Sharing Plans/Agreements.

2nd row: Non-directed commercial discards ('bycatch') not included in any IPHC Regulatory Area Catch Sharing Plans/Agreements.

3rd row: Recreational mortality not included in IPHC Regulatory Area Catch Sharing Plans/Agreements, 2B: discards only, 2C and 3A: unguided landings and discard mortality, 3B-4CDE: Recreational landings and discard mortality.

4th row: 2B-4CDE: Includes personal use and subsistence.

5th row: total of rows 1-4.

6th row: 2C and 3A: Commercial discard mortality is included in the Catch Sharing Plans for these areas.

7th row: 2A: All recreational landings and discard mortality, 2B: Recreational landings, 2C and 3A: Guided recreational landings and discard mortality.

8th row: 2A only: Ceremonial and subsistence mortality

10th row: All mortality included in IPHC Regulatory Area Catch Sharing Plans/Agreements.

10.1.2 IPHC Fishery Regulations: Commercial Fishing Periods (Sect. 9)

81. The Commission **ADOPTED** fishery regulation proposal [IPHC-2025-AM101-PropA2](#), that provided the framework for setting fishing periods for the commercial Pacific halibut fisheries. *[CAN/USA: Unanimous]*

Commercial fishing periods

82. The Commission **NOTED** that the IPHC Fishery Regulations were modified in January 2024 to change the time of day for the opening of the 2024 Pacific halibut commercial fishing period (Section 9, paragraph 2) from 12:00 noon, that had been in place for several years, to 06:00 local time. This change created a disconnect with the opening of the Alaska sablefish fishery, which under Alaska domestic regulations opens at 12:00 noon. Therefore, vessel operators who deployed Pacific halibut gear before 12:00 noon on the opening day of 15 March could not retain incidentally caught sablefish.

83. The Commission **ADOPTED** fishing periods for 2025 as provided below, thereby superseding the relevant portions of Section 9 of the IPHC Pacific halibut fishery regulations ([Appendix V](#)) by specifying that commercial fishing for Pacific halibut in all IPHC Regulatory Areas may begin no earlier than 06:00 hrs local time on 20 March 2025 and must cease at 23:59 hrs local time on 7 December 2025. *[CAN/USA: Unanimous]*

10.1.3 IPHC Fishery Regulations: minor amendments

84. The Commission **NOTED** fishery regulation proposal [IPHC-2025-AM101-PropA3](#), that incorporates revisions to the IPHC Fishery Regulations to improve consistency. However, as the improvements are not

related to any specific enforcement concerns but aims solely to prevent potential future misinterpretation of language in the IPHC Fishery Regulations, the Commission took no action.

10.2 Contracting Party fishery regulation proposals

10.2.1 IPHC Fishery Regulations: Recreational (Sport) Fishing for Pacific Halibut – IPHC Regulatory Areas 2C, 3A, 3B, 4A, 4B, 4C, 4D, 4E (Sect. 28) (Charter Management Measures in IPHC Regulatory Areas 2C and 3A (USA))

85. The Commission **ADOPTED** fishery regulation proposal [IPHC-2025-AM101-PropB1](#), that included charter management measures in IPHC Regulatory Areas 2C and 3A reflective of mortality limits adopted by the IPHC and resulting allocations under the North Pacific Fisheries Management Council's (NPFMC) Pacific halibut Catch Sharing Plan. ([Appendix VI](#)). [CAN/USA: Unanimous]

10.3 Stakeholder fishery regulation proposals

10.3.1 IPHC Fishery Regulations: Commercial Fishing Periods (Sect. 9) (Regulatory Area 2B)

86. The Commission **NOTED** fishery regulation proposal [IPHC-2025-AM101-PropC1](#), that proposed a year-round commercial Pacific halibut fishery in IPHC Regulatory Area 2B.

87. The Commission **AGREED** to consider this item in association with [IPHC-2025-AM101-PropA2](#).

88. The Commission **REQUESTED** that the IPHC Secretariat prepare an analysis detailing the biological, logistical and socioeconomic effects of year-round fishing in Canada, including challenges related to data compilation and marketing implications, for presentation at AM102.

10.3.2 IPHC Fishery Regulations: Application of Commercial Fishery Limits (Sect. 12) – addressing concerns regarding localized depletion around St. Matthew Island

89. The Commission **NOTED** fishery regulation proposal [IPHC-2025-AM101-PropC2](#), that proposed to prohibit persons who hold Regulatory Area 4C Pacific halibut IFQ from fishing that quota in Regulatory Area 4D North of 60 degrees North latitude and East of 174 degrees West longitude.

90. The Commission **REQUESTED** that the Secretariat communicate the details of proposal [IPHC-2025-AM101-PropC2](#) to the NPFMC for their awareness and consideration and specifically to advise the NPFMC that the Commission considers that the proposal falls under the NPFMC purview.

10.3.3 IPHC Fishery Regulations: Mortality and Fishery Limits (Sect. 5) (Regulatory Area 2A)

91. The Commission **NOTED** fishery regulation proposal [IPHC-2025-AM101-PropC3](#), that proposed a TCEY of 1.65 Mlb for 2025 in IPHC Regulatory Area 2A, and took it into consideration as part of discussions on TCEYs for incorporation into proposal [IPHC-2025-AM101-PropA1](#).

10.3.4 Other proposal (Non-IPHC Fishery Regulations): Rebuilding Plan for Pacific halibut

92. The Commission **NOTED** proposal [IPHC-2025-AM101-PropC4](#), that proposed a rebuilding plan for Pacific halibut, and **AGREED** that the topic would be taken up throughout the course of 2025 in association with the broader MSE and HSP processes.

10.3.5 IPHC Fishery Regulations: Mortality and Fishery Limits (Sect. 5) – definition of reaction to overfishing

93. The Commission **NOTED** fishery regulation proposal [IPHC-2025-AM101-PropC5](#), that proposed regulatory language that defined the term “overfishing” and the response if “overfishing”, and **AGREED** that the topic would be taken up throughout the course of 2025 in association with the broader MSE and HSP processes.

10.4 Stakeholder statements

94. The Commission **NOTED** paper [IPHC-2025-AM101-INF01 Rev 2](#) that provided the Commission with a consolidated document containing comments from stakeholders on existing IPHC Fishery Regulations and published regulatory proposals submitted to the Commission for its consideration at the AM101.

11. CONTRACTING PARTY NATIONAL REPORTS

11.1 Canada

95. The Commission **NOTED** the Contracting Party report from Canada (IPHC Regulatory Area 2B; [IPHC-2025-AM101-NR01 Rev 1](#)).
96. The Commission **NOTED** that the fishing period expansion (November 1 – April 30) to the existing 800-line pilot bottom trawl closure had been rolled over to the 2024 fishing period from the previous year. This expanded closure is an interim management measure intended to limit the harvest of spawning aggregations of arrowtooth flounder and Pacific halibut.

11.2 United States of America

97. The Commission **NOTED** the Contracting Party report from the United States of America (IPHC Regulatory Areas 2A/2C/3/4; [IPHC-2025-AM101-NR02 Rev 1](#)).
98. The Commission **NOTED** the additional information provided on the implementation and performance of the North Pacific Fisheries Management Council’s sablefish and Pacific halibut IFQ program’s ‘owner-operator’ objectives and **ACKNOWLEDGED** the guidance the review of such objectives and programs may provide to Canada’s domestic interests.

12. REPORT OF THE 101ST SESSION OF THE IPHC FINANCE AND ADMINISTRATION COMMITTEE (FAC101)

99. The Commission **NOTED** the Report of the 101st Session of the IPHC Finance and Administration Committee (FAC101) ([IPHC-2025-FAC101-R](#)) that was presented by Dr David T. Wilson (IPHC Executive Director).

12.1 Financial Statements for FY2024

100. The Commission **NOTED** the Financial Statements for FY2024 (financial period: 1 October 2023 to 30 September 2024), as detailed in paper [IPHC-2025-FAC101-04](#).
101. The Commission **NOTED** that total FY2024 expenditures were **US\$8,792,456.05**, against a total income of **US\$9,319,335.19**, that provided for a surplus in revenue over expenditures totalling **US\$526,879.14**. These savings were due to the ongoing efforts by the Secretariat to reduce costs. Surplus revenue is moved to the IPHC Reserve Fund (50) for use on other priorities such as the FISS (see [para. 9](#)).

12.2 Annual independent auditor’s report (FY2024)

102. The Commission **ACCEPTED** the independent external auditors report for FY2024 ([IPHC-2025-FAC101-05](#)), as per Regulation 14 of the IPHC Financial Regulations (2024), by consensus [*CAN/USA: Unanimous*]
103. The Commission **ACKNOWLEDGED** the great strides that the IPHC Secretariat has continued to make over the past five years to improve the transparency, accountability, and accessibility of the IPHC accounting systems and practices. The ‘unmodified opinion’ provided by the independent auditors for the past four years is a testament to the work done in that regard.
104. The Commission **NOTED** and **AGREED** that the IPHC Secretariat will be undertaking regular assessments of the IPHC’s vulnerability to key risks identified through the annual ‘[Protiviti Study](#)’ and utilized by auditors.

12.3 *FY2025 Budget – update*

105. The Commission **NOTED** the update on the FY2025 budget (financial period: 1 October 2024 to 30 September 2025), and that current expenditures for the first quarter of FY2025 are in-line with the approved budget.
106. The Commission **ADOPTED** the amended FY2025 budget (1 October 2024 to 30 September 2025), as detailed in [Appendix VII](#), noting that the amendments do not change the previously adopted Contracting Party contributions for FY2025: [*CAN/USA: Unanimous*]
- Canada: Contribution to the General Fund: **US\$970,606.61**.
 - U.S.A.: Contribution to the General Fund: **US\$4,421,652.32** (subject to appropriations);
 - U.S.A.: Contribution to the headquarters building lease and maintenance costs: **US\$458,608.60**.
107. The Commission **NOTED** the extra-budgetary (IFCP Fund deficit) contributions from each Contracting Party for FY2025 as follows:
- Canada: 50% Contribution to the IFCP Fund deficit (former staff pension plan): **US\$150.573**;
 - U.S.A.: 50% Contribution to the IFCP Fund deficit (former staff pension plan): **US\$150.573**.
108. The Commission **NOTED** that Fund 35 – AK Cost-Recovery expenses are budgeted at **US\$999,847** for FY2025, however, the amount that NOAA Fisheries has since indicated that they will provide for use in FY2025, and that which is to reimburse for IPHC’s FY2023 expenses has been indicated at **US\$792,523**. The shortfall of **US\$207,324** will be covered either by in-year cost savings, or from the IPHC Reserve Fund. The IPHC will need to continue to plan for such gaps between budgeted expenses and the amounts that are likely to be available via future cost recovery grants.
109. The Commission **NOTED** Canada’s expression of intent to make a supplementary contribution of **US\$300,000** in FY2025 towards 2025 FISS operating expenses, with the aim of offsetting the potential deficit in operating costs.

12.4 *Budget estimates: FY2026 (for approval); FY2027 and FY2028 (for information)*

FY2026

110. The Commission **RECALLED** that subsequent to the Commission approving an annual budget, with associated Contracting Party contributions, the Contracting Parties go through an internal process of review and appropriation. Should an appropriation be lower than the Commission approved budget, either Contracting Party can call an intersessional meeting for the Commission to consider in-year budget reductions to match the contributions received.
111. The Commission **NOTED** the FY2026 budget (1 October 2026 to 30 September 2026) as detailed in [Appendix VIII](#), including the contributions from the Contracting Parties to the General Fund for FY2026 as follows, and **AGREED** to adopt it through an intersessional process:
- a) Canada: Contribution to the General Fund: **US\$1,019,136.94**.
 - b) U.S.A.: Contribution to the General Fund: **US\$4,642,734.94** (subject to appropriations).
 - c) U.S.A.: Contribution to the headquarters building lease and maintenance costs: **US\$364,162.98**.
112. The Commission **NOTED** the optional extra-budgetary (IFCPF Fund deficit) contributions from each Contracting Party for FY2026 as follows:
- a) Canada:
 - i. 50% Contribution to the IFCP Fund deficit (former staff pension plan): **US\$150,573**.
 - b) U.S.A.:
 - i. 50% Contribution to the IFCP Fund deficit (former staff pension plan): **US\$150,573**.

113. The Commission **NOTED** and **AGREED** to the following FAC101 request:

FAC101-Req.01 (para. 28) *The FAC REQUESTED that the Secretariat evaluate the following potential options for cost savings that could be considered for the FY2026 or FY2027 budgets, recognizing that the FISS funding shortfall and prudent fiscal management may warrant departures from past IPHC practices:*

- a) *Options for restructuring future Annual Meetings to accomplish necessary business in three (3) or four (4) days rather than five (5) days;*
- b) *Options for restructuring the Conference Board and Processor Advisory Board into a single subsidiary body (that could reduce meeting space rental requirements and costs, including associated technology support/rental, secretariat staff support needed, minimum charges by hotels for food and beverage) and engaging a team of members of the CB and PAB to advise the Commission on a potential new structure that would ensure both processor and harvester perspectives are fairly represented and conveyed to the Commission;*
- c) *Options for using more economical venues for future Annual Meetings;*
- d) *Any other potential cost savings the Secretariat may identify for future Annual Meetings.*

FY2027 and FY2028

114. The Commission **NOTED** the IPHC Secretariat's indicative budgets for FY2027 and FY2028 (1 October 2026 to 30 September 2027, and 1 October 2027 to 30 September 2028, as provided in [Appendix IX](#) and [Appendix X](#), respectively, and that they are based on a nominal 5% increase in general contributions for Canada and U.S.A. to cover expected matching increases in operations expenses, cost in salaries and wages (based on cost of living and step increases) and health care costs.

13. REPORT OF THE 95TH SESSION OF THE IPHC CONFERENCE BOARD (CB095)

115. The Commission **NOTED** the Report of the 95th Session of the IPHC Conference Board (CB095) ([IPHC-2025-CB095-R](#)) that was presented by the Co-Chairpersons of the CB, Mr Jim Lane (Canada) and Ms Linda Behnken (USA). A total of 56 (62 in 2024) member organisations attended the Session from the two (2) Contracting Parties.

14. REPORT OF THE 30TH SESSION OF THE IPHC PROCESSOR ADVISORY BOARD (PAB030)

116. The Commission **NOTED** the Report of the 30th Session of the IPHC Processor Advisory Board (PAB030) ([IPHC-2025-PAB030-R](#)) that was presented by the Chairperson of the PAB, Mr Bruce Hale and the Vice-Chairperson, Mr Norman Pillen (USA). A total of 21 (19 in 2024) members attended the Session from the two (2) Contracting Parties.

15. OTHER BUSINESS

15.1 IPHC meetings calendar (2025-27)

117. The Commission **NOTED** paper [IPHC-2025-AM101-18](#) that proposed dates and places for the meetings of the Commission and its subsidiary bodies.

118. The Commission **NOTED** and **ACCEPTED** the offer by the USA to host the 102nd Session of the IPHC Annual Meeting (AM102) in Bellevue, WA, from 19-23 January 2026.

119. The Commission **AGREED** to make an exception to Rule II, para. 3.c of the IPHC Rules of Procedure (2024) (shown below) that limits Contracting Party representation to four (4) government agency personnel from each Contracting Party. The exception allows domestic agencies to nominate additional representatives to the MSAB, noting that costs for participation are to be borne by the domestic agency, and not the IPHC.

II.3.c: “Government agencies (incl. domestic management representatives and science advisors to each Contracting Party) (4-8; max of 4 from each Contracting Party)”

15.2 Election of a Chairperson and Vice-Chairperson for the next year

120. The Commission **NOTED** that the term of the current Chairperson, Mr Mark Waddell (Canada), is due to expire at the closing of the current Session, and as per Rule 9 of the IPHC Rules of Procedure (2024) the Commission is required to elect a new Chairperson for the next year.
121. **NOTING** Rule 9 of the IPHC Rules of Procedure (2024), the Commission called for nominations for the newly vacated position of Chairperson of the IPHC for the next year. Mr Jon Kurland (U.S.A.) was nominated, seconded, and elected as Chairperson of the IPHC for the next year.
122. The Commission **NOTED** that the term of the current Vice-Chairperson, Mr Jon Kurland (U.S.A.), is due to expire at the closing of the current Session, and as per Rule 9 of the IPHC Rules of Procedure (2024) the Commission is required to elect a new Vice-Chairperson for the next year.
123. **NOTING** Rule 9 of the Rules of Procedure (2024), the Commission called for nominations for the newly vacated position of Vice-Chairperson of the IPHC for the next year. Mr Mark Waddell (Canada) was nominated, seconded, and elected as Vice-Chairperson of the IPHC for the next year.

16. REVIEW OF THE DRAFT AND ADOPTION OF THE REPORT OF THE 101ST SESSION OF THE IPHC ANNUAL MEETING (AM101)

124. The Commission **REQUESTED** that the IPHC Secretariat finalise and publish the IPHC *Pacific Halibut Fishery Regulations (2025)* as soon as possible, **NOTING** that only minor editorial and formatting changes are permitted beyond the decisions made by the Commission at the AM101.
125. The Report of the 101st Session of the IPHC Annual Meeting ([IPHC-2025-AM101-R](#)) was **ADOPTED** on 31 January 2025, including the consolidated set of recommendations and requests arising from AM101, provided at [Appendix XI](#). [*CAN/USA: Unanimous*]

APPENDIX I**LIST OF PARTICIPANTS FOR THE 101ST SESSION OF THE IPHC ANNUAL MEETING (AM101)****Commission Officers**

Chairperson	Vice-Chairperson
Mr Mark Waddell (Canada)	Mr Jon Kurland (United States of America)

Commissioners

Canada	United States of America
Mr Mark Waddell	Mr Jon Kurland
Mr Neil Davis	Mr Robert Alverson
Mr Peter DeGreef	Mr Richard Yamada

Advisors/experts

Canada	United States of America
Ms Maureen Finn – Advisor	Ms Karla Bush – Policy Advisor
Ms Ann-Marie Huang – Advisor	Ms Heather Fitch - Technical Advisor
Ms Gwyn Mason – Advisor	Dr Peter Hulson – Scientific Advisor
Mr Paul Ryall – Advisor	Mr Kurt Iverson – Technical Advisor
Ms Danielle Scriven – Advisor	Mr Frank Lockhart – Technical/Policy Advisor
Mr. Matt Sweeting-Woods – Advisor	Mr Demian Schane – Legal Advisor
	Mr Dimitri Varmazis – Financial Advisor
	Ms Michelle Lorenzo – Financial Advisor

Observers (In Person)

Participant	Organisation	Email
Ms Susan Adair	Dana F. Besecker Company	susan@dfbcompany.com
Mr Kristopher Anderson	Sechelt Fishing Company	kanderson@tsain-ko.com
Mr James Armstrong	Freezer Longline Coalition	jim@freezerlongline.biz
Mr Ted Assu	A-Tlegay Fisheries GP	tedassu@gmail.com
Mr Roger Bain	Makah Tribal Council	roger.bain@makah.com
Mr Jim Balsiger	McCarty and Associates	jim.balsiger@gmail.com
Ms Linda Behnken	Alaska Longline Fishermen's Association	alfafishak@gmail.com
Mr Chase Berenson	Aleut Ventures	cberenson@aleutventures.com
Ms Sydney Bichsel	Real Time Data (Deckhand)	sydneyb@teamrtd.com
Mr Owen Bird	Sport Fishing Institute of BC	birdo@sportfishing.bc.ca
Mr David Boyes	Arbegar Fishing Co. Ltd.	mcboyes@telus.net
Mr David Brindle	Pacific Seafood	dbrindle@paseafood.com
Mr Aaron Brooks	Jamestown S'Klallam Tribe	abrooks@jamestowntribe.org
Mr Mark Callahan	John Nagle Company	msc@johnnagle.com
Mr Russell Cameron	UFAWU/Unifor	russelljcameron@yahoo.ca
Mr Marc. Carrel	Cordova District Fishermen United	marc.carrel@gmail.com
Mr Benjamin Cheeseman	National Oceanic & Atmospheric Administration	benjamin.cheeseman@noaa.gov
Mr William Shawn Cowpar	Council of the Haida Nation	shawn.cowpar@haidanation.com

Dr Sean Cox	IPHC Scientific Review Board	spcox@sfu.ca
Mr Dave Croonquist	Puget Sound Anglers	dcroonquist@gmail.com
Mr Dick Curran	F/V Cherokee	seaward99835@yahoo.com
Mr Brian Dafforn	Fishing Vessel Owners Association	briandafforn@gmail.com
Ms Angel Drobnica	Aleutian Pribilof Island Community Development Association	adrobnica@apicda.com
Mr Garrett Elwood	Next Generation Fishermens Association	fvwesternfreedom@gmail.com
Mr Craig Evens	Petersburg Vessel Owners Association	craigjevans@gmail.com
Mr Joey Ewing	Walcan	operations@fasseafood.com
Ms Emily Fitting	Northwest Indian Fisheries Commission	efitting@nwifc.org
Mr Tom Gemmell	Halibut Coalition	halibutcoalition@gmail.com
Mr Frank Geyer	Quileute Tribe	qnr.director@quileutetribe.com
Ms Darah Gibson	Department of Fisheries and Oceans	darah.gibson@dfo-mpo.gc.ca
Mr Gordon Gislason	GSGislason & Associates Ltd.	gsg@gsg.bc.ca
Mr TJ Greene	Makah Tribal Council	timothy.greene@makah.com
Mr Angus Grout	Arbegar	rommel@telus.net
Ms Erin Grout	SHA	ejgrout@gmail.com
Ms Jennifer Hagan	Quileute Tribe	jennifer.hagen@quileutetribe.com
Mr Bruce Hale	FAS Seafood Producers Ltd	bruce@fasseafood.com
Ms Heather Hall	Washington Department of Fish & Wildlife	heather.hall@dfw.wa.gov
Mr Randy Harder	Point No Point Treaty Council	rharder@pnptc.org
Mr Ryan Harris	Lummi Nation	ryanh@lummi-nsn.gov
Ms Andrea Hattan	National Oceanic & Atmospheric Administration	andrea.hattan@noaa.gov
Mr Robert Hauknes	Parma Fishing	parmafishco@gmail.com
Mr Kurtis Hayne	Marine Stewardship Council	kurtis.hayne@msc.org
Mr Christian Heath	Oregon Department of Fish & Wildlife	christian.t.heath@odfw.oregon.gov
Mr Nick Heras	Seaven Seas Fish Co., Ltd.	nheras@7seas.ca
Mr Brian Hoffman	Hoh Tribe	brian.hoffman@hohtribe-nsn.org
Mr Greg Inderland	Yakutat Seafoods	greg@yakutatseafoods.com
Mr Cleve Jackson	Quinault Indian Nation	cleve.jackson@quinault.org
Mr Lane Jackson	Lower Elwha Klallam Tribe	lane.jackson@elwha.org
Mr William Jasper	Makah Fisheries Management	william.jasper@makah.com
Mr Scott Jellison	Resurrection Bay Seafoods	sjellison@pacificseafood.com
Mr James Johnson	Deepsea Fishermens Union	jj.deepseafishermensunion@gmail.com
Mr Victor Johnson	Lummi Natural Resources	victorj@lummi-nsn.gov
Mr Steve Joner	Makah Fisheries	gofish@olypen.com
Mr Aaron Jones	Tulalip Tribes	aaronjones@tulaliptribes-nsn.gov
Mr Phil Joy	Alaska Department of Fish & Game – Sport Fish	philip.joy@alaska.gov

Mr Jeff Kauffman	St. Paul Fishing Company	jeff@spfishco.com
Mr Brian Kohn	Ulf Fishing Limited	ulffish@shaw.ca
Mr Jim Lane	Nuu-chah-nulth Tribal Council	jim.lane@nuuchahnulth.org
Mr Buck Laukitis	Magic Fish Company	buck.magicfish@gmail.com
Ms Mary Marking	Humboldt Area Saltwater Anglers	ma5marking@gmail.com
Mr Tom Marking	Humboldt Area Saltwater Anglers	tmmarking@gmail.com
Ms Lynn Mattes	Oregon Department of Fish & Wildlife	lynn.mattes@odfw.oregon.gov
Mr Doug Mavin	Pacific Ambition Ent. Ltd.	dmavin@shaw.ca
Mr Scott Mazzone	Quinault Indian Nation	smazzone@quinault.org
Mr Donald McLeod	S.M. Products (BC) Ltd.	lily@halibut.ca
Mr Shawn McManus	Deep Sea Fishermen's Union	shawn.mcmanus@yahoo.com
Ms Leah Mellinger	Port Gamble S'Klallam	Lmellinger@pgst.nsn.us
Mr Malcolm Milne	North Pacific Fisheries Association	milnemarine@yahoo.com
Mr Tommy Moore	Northwest Indian Fisheries Commission	tmoore@nwifc.org
Mr Mark Nelson	Lummi Nation	markn@lummi-nsn.gov
Mr Greg Ness	OBI Seafoods	greg.ness@obiseafoods.com
Ms Nina Nichols	Marine Stewardship Council	nina.nichols@smc.org
Mr Carl Nordmann	S.M. Products (B.C.) Ltd.	carl@halibut.ca
Mr Michael Offerman	Fishing Vessel Owners Association	longlinr@gmail.com
Ms Peggy Parker	Halibut Association of North America	peggyparker616@gmail.com
Mr Zeke Pellegrin	Pacific Fishermen's Vessel Owners Guild	zekepellegrin@telus.net
Mr Brian Pernula	Quinault Pride Seafood	brian.pernula@quinault.org
Mr Bryon Pfundt	Petersburg Vessel Owners	bryonprundt@gmail.com
Mr Larry Phillips	American Sportfishing Association	lphillips@asafishing.org
Mr Wilfred Phillips	Agamemnon Fishing Co. Ltd.	wildyukongold@dccnet.com
Mr Norman Pillen	Seafood Producers Cooperative	npillen@spsales.com
Mr Landry Price	Yukon Delta Fisheries Development Association	landry.ydfda@gmail.com
Mr Wyatt Rhea-Fournier	Marine Stewardship Council	wyatt.fournier@msc.org
Mr Steve Ricci	Bristol Bay Economic Development Corporation	steven@bbedc.com
Ms Evelyn Roozee	McGill University	evelyn.roozee@mail.mcgill.ca
Ms Sophie Roth	Department of Fisheries and Oceans	sophie.roth@dfo-mpo.gc.ca
Mr Trevor Ruelle	Department of Fisheries and Oceans	trevor.ruelle@dfo-mpo.gc.ca
Ms Christa Rusel	A-Tlegay Fisheries Society	christarusel@shawcable.com
Ms Emma Sands	Quileute Natural Resource	me.biologist@quileutetribe.com
Mr Scott Sandvig	Alaskan Leader Seafoods	scott@alaskanleader.com
Mr Karl Sather	Fishing Vessel Owners Association	ksather123@gmail.com
Mr Keith Singleton	Alaskan Leader Seafoods	keith@alaskanleader.com
Ms Rebecca Skinner	Alaska Whitefish Trawlers Association	alaskawhitefish@gmail.com
Mr Danial Smith	A-Tlegay Fisheries Society	reidpass_1@hotmail.com

Mr Chris Sporer	Pacific Halibut Management Association of BC	chris.sporer@phma.ca
Mr Adam St. Saviour	Alaska Department of Fish & Game – Sport Fish	adam.stsaviour@alaska.gov
Mr Robert Stanley	Rubble Fishing Ltd.	rubblefish@shaw.ca
Mr Russell Svec	Makah Tribe – Makah Fisheries Management	russell.svec@makah.com
Mr Blake Tipton	S. M. Products (B.C.) Ltd.	blake@halibut.ca
Ms Julie Toomey	The Aleut Corporation	jtoomey@aleutcorp.com
Mr Chet Tweed	Quinault Indian Nation	chet.tweed@quinault.org
Mr Paul Wilkins	Coastal Villages Region Fund	paul_w@coastalvillages.org
Mr Doug Woodruff	Quileute Tribe	travel@quileutetribe.com
Mr Phillip Wyman	Sitka Blackcod and Halibut Marketing Association	philwyman@hotmail.com

Observers (Remote)

Participant	Organisation	Email
Ms Haley Anderson	A.I.S., Inc.	haleya@aisobservers.com
Mr Phil Anderson	Westport Charterboat Association	pmand001@comcast.net
Mr Chuck Ashcroft	Nil	chuckashcroft@telus.net
Ms Hal Bernton	Independent journalist	hbernton@gmail.com
Mr Christopher Bos	Sport Fishing Advisory Board - South Coast	chris@anglerscoalition.com
Mr Forrest Braden	Southeast Alaska Guides Organization	forrest@seagoalaska.org
Mr Bill Campbell	South Vancouver Island Anglers Coalition	bill@anglerscoalition.com
Mr Robin Clover	Pacific Fishery Management Council	4x4leafclover@gmail.com
Mr Rob Davis	Washington Department of Fish & Wildlife	robert.davis@dfw.wa.gov
Mr Joseph Dingdinger	Nil	Nil
Ms Robin Ehlke	Pacific Fishery Management Council	robin.ehlke@noaa.gov
Ms Deirdre Finn	Department of Fisheries and Oceans	deirdre.finn@df-mpo.gc.ca
Mr John Fortuna	Jones Fortuna LP	jfortuna@jonesfortuna.com
Mr Mike Fowler	Sport Fishing Advisory Board - North	midon@protomail.ch
Mr Bob Gallaughier	Gallaughier's Sports Fishing Camp	gallaughers1@shaw.ca
Mr Chris German	US Coast Guard	Chris.L.German@uscg.mil
Mr Jason Gobin	Tulalip tribes	jasongobin@tulaliptribes-nsn.gov
Mr Eric Grauvogel	Nil	Egrauvogel@hotmail.com
Ms Kathy Hansen	Southeast Alaska Fishermen's Alliance (SEAFA)	kathy@seafa.org
Mr Robert Hanson	F/V Oracle	fvnakat@gmail.com
Ms Darlene Haugan	Archipelago	darleneh@archipelago.ca
Mr Ross Hofacre	F/V Jollene K	hofacreross@gmail.com
Mr Carter Hughes	Seafood Producers Cooperative	carterhughes@hotmail.com

Mr Ben Jevons	Alaska Department of Fish & Game	ben.jevons@alaska.gov
Mr Dave Johnson	Puget Sound Anglers	dave@kitsapmarina.com
Mr Joe Kashevarof	Central Bering Sea Fishermen's Association	joekashevarof@cbsfa.com
Mr Robert Kehoe	Purse Seine Vessel Owners Association	rfk@psvoa.org
Ms Andrea Keikkala	United Catcher Boats	keikkala@ucba.org
Ms Anna Khan	Department of Fisheries and Oceans	anna.khan@dfo-mpo.gc.ca
Mr Deryk Krefting	West Coast Fishing Guides Association	deryk@pacificnetandtwine.com
Mr Gerald Kristianson	Sport Fishing Advisory Board	gerrykr@telus.net
Mr Adam Lake	Alaska Department of Fish & Game – Sport Fish	adam.lake@alaska.gov
Ms Melissa Mandrup	NMFS-West Coast Region	melissa.mandrup@noaa.gov
Mr Cristian Martinez	A.I.S., Inc.	cristianm@aisobservers.com
Ms Jessica Marx	LFS	jmar907@gmail.com
Ms Heather McCarty	170 Degrees West	hdmccarty@gmail.com
Ms Corinna McMackin	NOAA Office of General Counsel	corinna.mcmackin@noaa.gov
Mr Myron Melovidov	F/V Inlet Quest	mmelovidov@cbsfa.com
Mr Ray Melovidov	Central Bering Sea Fishermen's Association	raymelovidov@cbsfa.com
Mr Sean Melovidov	F/V Inlet Quest	sean.melovidov@gmail.com
Mr Andrew Mezirow	Graylight Fisheries, LLC	fishgraylight@gmail.com
Ms Jessica Moffatt	Island Marine Aquatic Working Group	jessicaannemoffatt@gmail.com
Mr Gerry Morrison	South Vancouver Island Anglers Coalition	royalbayfc@gmail.com
Mr Corey Niles	Washington Department of Fish & Wildlife	corey.niles@dfw.wa.gov
Ms Megan O'Neil	Canfisco Group USA	meganoneil@npsi.us
Mr Martin Paish	Sport Fishing Advisory Board - Main Board	martinpaish1@gmail.com
Ms Melanie Parker	California Department of Fish & Wildlife	melanie.parker@wildlife.ca.gov
Mr Mateo Paz-Soldan	MPStrategies LLC	mateo@mpstrategies.net
Mr James Phillips	Pacific Fishing, Inc.	Pacificdawn6@gmail.com
Ms Patricia Phillips	Pacific Fishing, Inc.	pelicandragonfly@yahoo.com
Mr Kevin Romanin	Government of B.C. - WLRS	kevin.romanin@gov.bc.ca
Mr Brett Roth	Fisherman	alaskabrett@yahoo.com
Mr Aidan Schubert	Council of the Haida Nation	aidan.schubert@haidanation.com
Mr Liam Stockwell	Aero Trading Co. Ltd.	liam@aerotrading.ca
Ms Mary Thiess	Department of Fisheries and Oceans	mary.thiess@dfo-mpo.gc.ca
Mr Mike Turner	Province of BC	michael.r.turner@gov.bc.ca
Mr Erik Velasko	Nil	Nil
Mr Lance Weber	Sport Fishing Institute of BC	Lanceweber1970@gmail.com
Ms Sarah Webster	Alaska Seafood Cooperative	swebster@seanet.com

Mr Ernie Weiss	Aleutians East Borough	eweiss@aeboro.org
Mr John Williams	Alaska Sea Grant	john.williams@alaska.edu

IPHC Secretariat (In-person)

Participant	Title	Email
Dr David T. Wilson	Executive Director	david.wilson@iphc.int
Dr Barbara Hutniczak	Fisheries Regulations & Data Services Branch Manager	barbara.hutniczak@iphc.int
Dr Josep Planas	Biological and Ecosystem Sciences Branch Manager	josep.planas@iphc.int
Dr Allan Hicks	Quantitative Scientist (MSE)	allan.hicks@iphc.int
Dr Ian Stewart	Quantitative Scientist (Stock Assessment)	ian.stewart@iphc.int
Ms Kelly Chapman	Administrative Coordinator	kelly.chapman@iphc.int
Ms Katalla Fairbanks	Accountant – Sommerville & Associates	IPHC_AccountingServices.iphc.int
Ms Dondi Hayhurst	Accountant – Sommerville & Associates	IPHC_AccountingServices.iphc.int
Mr Tyler Jack	Setline Survey Specialist (Snr)	tyler.jack@iphc.int
Mr Thomas Kong	Fisheries Data Specialist (HQ-GIS)	tom.kong@iphc.int
Ms Kelsey Magrane	Fisheries Data Specialist (HQ)/Otolith Technician	kelsey.magrane@iphc.int
Ms Rachel Rillera	Setline Survey Specialist	rached.rillera@iphc.int
Ms Monica Thom	Port Operations Coordinator	monica.thom@iphc.int
Mr Robert Tynes	Information Technology Specialist	robert.tynes@iphc.int
Mr Kenny Wickham	Administrative Specialist	kenneth.wickham@iphc.int
Ms Ola Wietecha	Administrative Specialist	ola.witetecha@iphc.int

IPHC Secretariat (Remote)

Participant	Title	Email
Dr Raymond Webster	Quantitative Scientist (Biometrician)	ray.webster@iphc.int
Mr Mohammad Arian	Administrative Specialist (Accounting)	mohammad.arian@iphc.int
Mr Kevin Coll	Setline Survey Specialist	kevin.coll@iphc.int
Ms Tara Coluccio	Administrative Specialist/Publications (Snr)	tara.coluccio@iphc.int
Mr Claude Dykstra	Research Biologist (Mortality & Survival)	clauded.dykstra@iphc.int
Ms Joan Forsberg	Otolith Laboratory Technician (Snr)	joan.forsberg@iphc.int
Mr Andrew Jasonowicz	Research Biologist (Genetics)	andy.jasonowicz@iphc.int
Ms Kimberly Sawyer Van Vleck	Fisheries Data Specialist (HQ)/Otolith Technician	kimberly.sawyer.vanvleck@iphc.int
Ms Crystal Simchick	Biological Science Lab Technician	crystal.simchick@iphc.int
Mr Robert (Bob) Smedley	Technical Consultant	robert.smedley@iphc.int
Mr Afshin Taheri	Information Technology Specialist (Application Developer)	afshin.taheri@iphc.int
Ms Huyen Tran	Fisheries Data Coordinator	huyen.tran@iphc.int
Ms Kayla Ualesi	Setline Survey Coordinator	kayla.ualesi@iphc.int

APPENDIX II

AGENDA FOR THE 101ST SESSION OF THE IPHC ANNUAL MEETING (AM101)

Date: 27-31 January 2025

Location: Vancouver, BC, Canada

Venue: [Pan Pacific Hotel](#)

Time (PST): 27 Jan: 12:30-17:30;

28-30 Jan: 09:00-17:00 daily

31 Jan: 09:00-13:00

Chairperson: Mr Mark Waddell (Canada)

Vice-Chairperson: Mr Jon Kurland (USA)

1. **OPENING OF THE SESSION** (Chairperson and Vice-Chairperson)
2. **ADOPTION OF THE AGENDA AND ARRANGEMENTS FOR THE SESSION**
(Chairperson & Executive Director)
 - *IPHC-2025-AM100-01 Agenda & Schedule for the 100th Session of the IPHC Annual Meeting (AM100)*
 - *IPHC-2025-AM100-02 List of Documents for the 100th Session of the IPHC Annual Meeting (AM100)*
3. **IPHC PROCESS**
 - 3.1 Update on actions arising from the 100th Session of the IPHC Annual Meeting (AM100), 2024 Special Sessions, intersessional decisions, and the 100th Session of the IPHC Interim Meeting (IM100) (D. Wilson)
 - *IPHC-2025-AM101-03 Update on actions arising from the 100th Session of the IPHC Annual Meeting (AM100), 2024 Special Sessions, intersessional decisions, and the 100th Session of the IPHC Interim Meeting (IM100) (D. Wilson)*
 - 3.2 Report of the IPHC Secretariat (2024) (D. Wilson & B. Hutniczak)
 - *IPHC-2025-AM101-04 Report of the IPHC Secretariat (2024) (D. Wilson & B. Hutniczak)*
 - 3.3 2nd IPHC Performance Review (PRIPHC02): Implementation of recommendations (D. Wilson)
 - *IPHC-2025-AM101-05 Implementation of the Recommendations from the 2nd IPHC Performance Review (PRIPHC02) (D. Wilson)*
 - 3.4 Reports of the IPHC Management Strategy Advisory Board (MSAB Co-Chairpersons)
 - *IPHC-2024-MSAB019-R Report of the 19th Session of the IPHC Management Strategy Advisory Board (MSAB019)*
 - *IPHC-2024-MSAB020-R Report of the 20th Session of the IPHC Management Strategy Advisory Board (MSAB020)*
 - 3.5 Reports of the IPHC Scientific Review Board (SRB Chairperson)
 - *IPHC-2024-SRB022-R Report of the 24th Session of the IPHC Scientific Review Board (SRB024)*
 - *IPHC-2024-SRB023-R Report of the 25th Session of the IPHC Scientific Review Board (SRB025)*

- 3.6 Report of the 25th Session of the IPHC Research Advisory Board (RAB025) (RAB Chairperson)
- *IPHC-2024-RAB025-R Report of the 25th Session of the IPHC Research Advisory Board (RAB025)*
- 3.7 International Pacific Halibut Commission 5-year program of Integrated Research and Monitoring (2022-26) (D. Wilson, J. Planas, I. Stewart, A. Hicks, B. Hutniczak, & R. Webster)
- *IPHC-2025-AM101-06 International Pacific Halibut Commission 5-Year program of integrated research and monitoring (2022-26): Updates (D. Wilson, J. Planas, I. Stewart, A. Hicks, B. Hutniczak, & R. Webster)*

4. FISHERY MONITORING

- 4.1 Fishery-dependent data overview (2024)
- 4.1.1 Port operations
- *IPHC-2025-AM101-07 Rev_1 Fisheries data collection design and implementation in 2024 - Port Operations (M. Thom, I. Stewart, R. Webster)*
- 4.1.2 Fisheries data
- *IPHC-2025-AM101-08 Rev_1 Fisheries data overview (2024) (B. Hutniczak, H. Tran, T. Kong, K. Sawyer van Vleck, & K. Magrane)*
- 4.2 Fishery-independent data overview (2024)
- 4.2.1 IPHC Fishery-Independent Setline Survey (FISS) design and implementation in 2024 (T. Jack)
- *IPHC-2025-AM101-09 IPHC Fishery-independent setline survey (FISS) design and implementation in 2024 (K. Ualesi, T. Jack, R. Rillera & K. Coll)*

5. STOCK STATUS OF PACIFIC HALIBUT (2024)

- 5.1 Space-time modelling of survey data (R. Webster)
- *IPHC-2025-AM101-10 Space-time modelling of survey data (R. Webster)*
- 5.2 Stock Assessment: Data overview and stock assessment (2024)
- *IPHC-2025-AM101-11 Data overview and stock assessment for Pacific halibut (*Hippoglossus stenolepis*) at the end of 2024 (I. Stewart, A. Hicks, R. Webster, D. Wilson)*

6. MANAGEMENT STRATEGY EVALUATION

- 6.1 IPHC Management Strategy Evaluation: update (A. Hicks)
- *IPHC-2025-AM101-12 IPHC Management Strategy Evaluation and Harvest Strategy Policy (A. Hicks, I. Stewart, & D. Wilson)*
 - *IPHC-2025-AM101-17 IPHC Interim Harvest Strategy Policy (A. Hicks, I. Stewart, & D. Wilson)*

7. HARVEST DECISION TABLE 2025

- 7.1 Stock projections and harvest decision table 2025-2027 (I. Stewart & A. Hicks)
- *IPHC-2025-AM101-13 Stock projections and harvest decision table for 2025-2027 (I. Stewart & A. Hicks)*

8. FISS DESIGN EVALUATIONS 2025-2029

- 8.1 2025-29 FISS design evaluation (R. Webster)
 ➤ *IPHC-2025-AM101-14 2025 and 2026-29 FISS designs (R. Webster, I. Stewart, K. Ualesi, T. Jack, & D. Wilson)*

9. BIOLOGICAL AND ECOSYSTEM SCIENCES – PROJECT UPDATES

- 9.1 Report on Current and Future Biological and Ecosystem Science Research Activities (J. Planas)
 ➤ *IPHC-2025-AM101-15 Report on Current and Future Biological and Ecosystem Science Research Activities (J. Planas)*

10. IPHC FISHERY REGULATIONS: PROPOSALS FOR THE 2024-25 PROCESS

- *IPHC-2025-AM101-16 Rev_1 IPHC Fishery Regulations: Proposals for the 2024-25 process (B. Hutniczak)*
- 10.1 IPHC Secretariat fishery regulation proposals (B. Hutniczak)
 ➤ *IPHC-2025-AM101-PropA1 IPHC Fishery Regulations: Mortality and Fishery Limits (Sect. 5)*
 ➤ *IPHC-2025-AM101-PropA2 IPHC Fishery Regulations: Commercial Fishing Periods (Sect. 9)*
 ➤ *IPHC-2025-AM101-PropA3 IPHC Fishery Regulations: Minor amendments*
- 10.2 Contracting Party fishery regulation proposals (Contracting Parties)
 ➤ *IPHC-2025-AM101-PropB1 IPHC Fishery Regulations: Recreational (Sport) Fishing for Pacific Halibut – IPHC Regulatory Areas 2C, 3A, 3B, 4A, 4B, 4C, 4D, 4E (Sect. 29) (Charter Management Measures in IPHC Regulatory Areas 2C and 3A (USA))*
- 10.3 Stakeholder fishery regulation proposals (Stakeholders)
 ➤ *IPHC-2025-AM101-PropC1 IPHC Fishery Regulations: Commercial Fishing Periods (Sect. 9) – year-round commercial Pacific halibut fishery in IPHC Regulatory Area 2B (R. Hauknes)*
 ➤ *IPHC-2025-AM101-PropC2 IPHC Fishery Regulations: Application of Commercial Fishery Limits (Sect. 12) – addressing concerns regarding localized depletion around St. Matthew Island (S. McManus)*
 ➤ *IPHC-2025-AM101-PropC3 IPHC Fishery Regulations: Mortality and Fishery Limits (Sect. 5) - TCEY in Regulatory Area 2A (T. Greene)*
 ➤ *IPHC-2025-AM101-PropC4 Other proposal (Non-IPHC Fishery Regulations): Rebuilding Plan for Pacific halibut (M. Laukitis)*
 ➤ *IPHC-2025-AM101-PropC5 IPHC Fishery Regulations: Mortality and Fishery Limits (Sect. 5) – definition of reaction to overfishing (M. Milne)*
- 10.4 Stakeholder statements (B. Hutniczak)
 ➤ *IPHC-2025-AM101-INF01 Rev_1 Stakeholder Statements on IPHC Fishery Regulations or published regulatory proposals (B. Hutniczak)*

11. CONTRACTING PARTY NATIONAL REPORTS

- 11.1 Canada (G. Mason)
 ➤ *IPHC-2025-AM101-NR01 Rev_1 Canada: National Report (Fisheries and Oceans Canada (DFO))*
- 11.2 United States of America (K. Iverson)

-
- *IPHC-2025-AM101-NR02 Rev_1 United States of America: National Report (NOAA Fisheries)*
 - 12. REPORT OF THE 101th SESSION OF THE IPHC FINANCE AND ADMINISTRATION COMMITTEE (FAC101) (D. Wilson)**
 - *IPHC-2025-FAC101-R Report of the 101st Session of the IPHC Finance and Administration Committee (FAC101)*
 - 13. REPORT OF THE 95th SESSION OF THE IPHC CONFERENCE BOARD (CB095) (CB Co-Chairpersons)**
 - *IPHC-2025-CB095-R Report of the 95th Session of the IPHC Conference Board (CB095)*
 - 14. REPORT OF THE 30th SESSION OF THE IPHC PROCESSOR ADVISORY BOARD (PAB030) (PAB Chairperson and Vice-Chairperson)**
 - *IPHC-2025-PAB030-R Report of the 30th Session of the IPHC Processor Advisory Board (PAB030)*
 - 15. OTHER BUSINESS**
 - 15.1 IPHC meetings calendar (2025-27) (D. Wilson)
 - *IPHC-2025-AM101-18 IPHC 3-year meetings calendar (2025-27) (IPHC Secretariat)*
 - 15.2 Election of Chairperson and Vice-Chairperson for the next year (D. Wilson)
 - 16. REVIEW OF THE DRAFT AND ADOPTION OF THE REPORT OF THE 101st SESSION OF THE IPHC ANNUAL MEETING (AM101) (Chairperson)**

APPENDIX III
LIST OF DOCUMENTS FOR THE 101ST SESSION OF THE IPHC ANNUAL MEETING (AM101)

Meeting documents	Title	Availability
IPHC-2025-AM101-01	Agenda & Schedule for the 101 st Session of the IPHC Annual Meeting (AM101)	✓ 27 Mar 2024 ✓ 09 Dec 2024 ✓ 14 Jan 2025
IPHC-2025-AM101-02	List of Documents for the 101 st Session of the IPHC Annual Meeting (AM101)	✓ 27 Mar 2024 ✓ 31 Oct 2024 ✓ 30 Jan 2025
IPHC-2025-AM101-03	Update on actions arising from the 100 th Session of the IPHC Annual Meeting (AM100), 2024 Special Sessions, intersessional decisions, and the 100 th Session of the IPHC Interim Meeting (IM100) (D. Wilson)	✓ 09 Dec 2024
IPHC-2025-AM101-04	Report of the IPHC Secretariat (2024) (D. Wilson & B. Hutniczak)	✓ 12 Dec 2024
IPHC-2025-AM101-05	Implementation of the Recommendations from the 2 nd IPHC Performance Review (PRIPHC02) (D. Wilson)	✓ 09 Dec 2024
IPHC-2025-AM101-06	International Pacific Halibut Commission 5-Year program of integrated research and monitoring (2022-26): Updates (D. Wilson, J. Planas, I. Stewart, A. Hicks, B. Hutniczak, & R. Webster)	✓ 09 Dec 2024
IPHC-2025-AM101-07 Rev_1	Fisheries data collection design and implementation in 2024 - Port Operations (M. Thom, I. Stewart, R. Webster)	✓ 13 Dec 2024 ✓ 16 Jan 2025
IPHC-2025-AM101-08 Rev_2	Fisheries data overview (2024) (B. Hutniczak, H. Tran, T. Kong, K. Sawyer van Vleck. & K. Magrane)	✓ 12 Dec 2024 ✓ 14 Jan 2025 ✓ 30 Jan 2025
IPHC-2025-AM101-09	IPHC Fishery-independent setline survey (FISS) design and implementation in 2024 (K. Ualesi, T. Jack, R. Rillera, & K. Coll)	✓ 12 Dec 2024
IPHC-2025-AM101-10	Space-time modelling of survey data (R. Webster)	✓ 12 Dec 2024
IPHC-2025-AM101-11	Data overview and stock assessment for Pacific halibut (<i>Hippoglossus stenolepis</i>) at the end of 2024 (I. Stewart, A. Hicks, R. Webster, D. Wilson)	✓ 10 Dec 2024
IPHC-2025-AM101-12	IPHC Management Strategy Evaluation and Harvest Strategy Policy (A. Hicks, I. Stewart, & D. Wilson)	✓ 09 Dec 2024
IPHC-2025-AM101-13	Stock projections and harvest decision table for 2025-2027 (I. Stewart & A. Hicks)	✓ 10 Dec 2024
IPHC-2025-AM101-14	2025 and 2026-29 FISS designs (R. Webster, I. Stewart, K. Ualesi, T. Jack, & D. Wilson)	✓ 12 Dec 2024
IPHC-2025-AM101-15	Report on Current and Future Biological and Ecosystem Science Research Activities (J. Planas)	✓ 10 Dec 2024

IPHC-2025-AM101-16 Rev_1	IPHC Fishery Regulations: Proposals for the 2024-25 process (B. Hutniczak)	✓ 13 Dec 2024 ✓ 28 Dec 2024
IPHC-2025-AM101-17	IPHC Interim: Harvest Strategy Policy (2024) (A. Hicks, I. Stewart, D. Wilson)	✓ 09 Dec 2024
IPHC-2025-AM101-18	IPHC 3-year meetings calendar (2025-27) (IPHC Secretariat)	✓ 09 Dec 2024
<i>Contracting Party National Reports</i>		
IPHC-2025-AM101-NR01 Rev_1	Canada: National Report (Fisheries and Oceans Canada (DFO))	✓ 27 Dec 2024 ✓ 7 Jan 2025
IPHC-2025-AM101-NR02 Rev_1	United States of America: National Report (NOAA Fisheries)	✓ 24 Dec 2024 ✓ 14 Jan 2025
<i>IPHC Fishery Regulation proposals for 2025</i>		
<i>IPHC Secretariat Fishery Regulation proposals for 2025</i>		
IPHC-2025-AM101-PropA1	IPHC Fishery Regulations: Mortality and Fishery Limits (Sect. 5)	✓ 09 Dec 2024
IPHC-2025-AM101-PropA2	IPHC Fishery Regulations: Commercial Fishing Periods (Sect. 9)	✓ 09 Dec 2024
IPHC-2025-AM101-PropA3	IPHC Fishery Regulations: Minor amendments	✓ 27 Dec 2024
<i>Contracting Party Fishery Regulation proposals for 2025</i>		
IPHC-2025-AM101-PropB1	IPHC Fishery Regulations: Recreational (Sport) Fishing for Pacific Halibut – IPHC Regulatory Areas 2C, 3A, 3B, 4A, 4B, 4C, 4D, 4E (Sect. 28) (Charter Management Measures in IPHC Regulatory Areas 2C and 3A (USA))	✓ 20 Dec 2024
<i>Other Stakeholder Fishery Regulation proposals for 2025</i>		
IPHC-2025-AM101-PropC1	IPHC Fishery Regulations: Commercial Fishing Periods (Sect. 9) – year-round commercial Pacific halibut fishery in IPHC Regulatory Area 2B (R. Hauknes)	✓ 09 Dec 2024
IPHC-2025-AM101-PropC2	IPHC Fishery Regulations: Application of Commercial Fishery Limits (Sect. 12) – addressing concerns regarding localized depletion around St. Matthew Island (S. McManus)	✓ 10 Dec 2024
IPHC-2025-AM101-PropC3	IPHC Fishery Regulations: Mortality and Fishery Limits (Sect. 5) - TCEY in Regulatory Area 2A (T. Greene)	✓ 23 Dec 2024
IPHC-2025-AM101-PropC4	<i>Other proposal (Non-IPHC Fishery Regulations):</i> Rebuilding Plan for Pacific halibut (M. Laukitis)	✓ 27 Dec 2024
IPHC-2025-AM101-PropC5	IPHC Fishery Regulations: Mortality and Fishery Limits (Sect. 5) – definition of reaction to overfishing (M. Milne)	✓ 28 Dec 2024
<i>Information papers</i>		
IPHC-2025-AM101-INF01 Rev_2	Stakeholder Statements on IPHC Fishery Regulations or published regulatory proposals (B. Hutniczak)	✓ 13 Dec 2024 ✓ 27 Dec 2024

		✓ 26 Jan 2025
IPHC-2025-AM101-INF02	The IPHC mortality projection tool for 2025 mortality limits (I. Stewart)	✓ 10 Dec 2024
IPHC-2025-AM101-INF03	Using artificial intelligence (AI) for supplementing Pacific halibut age determination from collected otoliths (B. Hutniczak, J. Forsberg, K. Sawyer Van Vleck, & K. Magrane)	✓ 10 Jan 2025
IPHC-2025-AM101-INF04	Using Management Strategy Evaluation to investigate the effects of fishing and the environment on Pacific halibut (A. Hicks)	✓ 17 Jan 2024
<i>Reports from IPHC subsidiary bodies (2023-24)</i>		
IPHC-2024-MSAB019-R	Report of the 19 th Session of the IPHC Management Strategy Advisory Board (MSAB019)	✓ 3 May 2024
IPHC-2024-SRB024-R	Report of the 24 th Session of the IPHC Scientific Review Board (SRB024)	✓ 20 Jun 2024
IPHC-2024-SRB025-R	Report of the 25 th Session of the IPHC Scientific Review Board (SRB025)	✓ 26 Sept 2024
IPHC-2024-MSAB020-R	Report of the 20 th Session of the IPHC Management Strategy Advisory Board (MSAB020)	✓ 31 Oct 2024
IPHC-2024-RAB025-R	Report of the 25 th Session of the IPHC Research Advisory Board (RAB025)	✓ 20 Nov 2024
IPHC-2024-IM100-R	Report of the 100 th Session of the IPHC Interim Meeting (IM100)	✓ 26 Nov 2024
IPHC-2025-FAC101-R	Report of the 101 st Session of the IPHC Finance and Administration Committee (FAC101)	✓ 28 Jan 2025
IPHC-2025-PAB030-R	Report of the 30 th Session of the IPHC Processor Advisory Board (PAB030)	✓ 29 Jan 2025
IPHC-2025-CB095-R	Report of the 95 th Session of the IPHC Conference Board (CB095)	✓ 30 Jan 2025

APPENDIX IV
IPHC FISHERY REGULATIONS: MORTALITY AND FISHERY LIMITS (SECT. 5)

IPHC-2025-AM101-PropA1

5. Mortality and Fishery Limits

- (1) The Commission has adopted the following distributed mortality (TCEY) values:

IPHC Regulatory Area	Distributed mortality limits (TCEY) (net weight)	
	Tonnes (t)	Million Pounds (Mlb)
Area 2A (California, Oregon, and Washington)	748	1.65
Area 2B (British Columbia)	2,472	5.45
Area 2C (southeastern Alaska)	2,368	5.22
Area 3A (central Gulf of Alaska)	4,119	9.08
Area 3B (western Gulf of Alaska)	1,297	2.86
Area 4A (eastern Aleutians)	608	1.34
Area 4B (central and western Aleutians)	472	1.04
Areas 4CDE (Bering Sea)	1,397	3.08
Total	13,481	29.72

- (2) The fishery limits resulting from the IPHC-adopted distributed mortality (TCEY) limits and the existing Contracting Party catch sharing arrangements are as follows, recognising that each Contracting Party may implement more restrictive limits:**

IPHC Regulatory Area	Fishery limits (net weight)	
	Tonnes (t)	Million Pounds (Mlb)*
Area 2A (California, Oregon, and Washington)	694	1.53
Non-tribal directed commercial (south of Pt. Chehalis)	118	259,515*
Non-tribal incidental catch in salmon troll fishery	21	45,797*
Non-tribal incidental catch in sablefish fishery (north of Pt. Chehalis)	32	70,000*
Treaty Indian commercial	236	520,700*
Treaty Indian ceremonial and subsistence (year-round)	7	14,800*
Recreational – Washington**	129	284,042*
Recreational – Oregon**	134	295,367*
Recreational – California**	18	39,780*
Area 2B (British Columbia) (combined commercial and recreational)	2,064	4.55
Commercial fishery	1,755	3.87
Recreational fishery	308	0.68
Area 2C (southeastern Alaska) (combined commercial and guided recreational)	1,774	3.91
Commercial fishery (includes 3.07 Mlb landings and 0.12 Mlb discard mortality)	1,447	3.19

Guided recreational fishery (includes landings and discard mortality)	327	0.72
Area 3A (central Gulf of Alaska) (combined commercial and guided recreational)	3,547	7.82
Commercial fishery (includes 5.89 Mlb landings and 0.45 Mlb discard mortality)	2,876	6.34
Guided recreational fishery (includes landings and discard mortality)	671	1.48
Area 3B (western Gulf of Alaska)	1,120	2.47
Area 4A (eastern Aleutians)	454	1.00
Area 4B (central and western Aleutians)	408	0.90
Areas 4CDE (Bering Sea)	730	1.61
Area 4C (Pribilof Islands)	340	0.75
Area 4D (northwestern Bering Sea)	340	0.75
Area 4E (Bering Sea flats)	54	0.12
Total	10,791	23.79

* Allocations resulting from the IPHC Regulatory Area 2A Catch Share Plan are listed in *pounds*.

** In IPHC Regulatory Area 2A, the USA (NOAA Fisheries) may take in-season action to reallocate the recreational fishery limits between Washington, Oregon, and California after determining that such action will not result in exceeding the overall IPHC Regulatory Area 2A recreational fishery limit and that such action is consistent with any domestic catch sharing plan. Any such reallocation will be announced by the USA (NOAA Fisheries) and published in the Federal Register.

APPENDIX V
IPHC FISHERY REGULATIONS: COMMERCIAL FISHING PERIODS (SECT. 9)

IPHC-2025-AM101-PropA2

9. Commercial Fishing Periods

- (1) The fishing periods for each IPHC Regulatory Area apply where the fishery limits specified in section 5 have not been taken.
- (2) Unless the Commission specifies otherwise, commercial fishing for Pacific halibut in all IPHC Regulatory Areas may begin no earlier in the year than 06:00 local time on 20 March.
- (3) All commercial fishing for Pacific halibut in all IPHC Regulatory Areas shall cease for the year at 23:59 local time on 7 December.
- (4) Regulations pertaining to the non-tribal directed commercial fishing² periods in the IPHC Regulatory Area 2A will be promulgated by NOAA Fisheries and published in the Federal Register. This fishery will occur between the dates and times listed in paragraphs (2) and (3) of this Section.
- (5) Notwithstanding paragraph (4) of this Section, an incidental catch fishery³ is authorized during the sablefish seasons in IPHC Regulatory Area 2A in accordance with regulations promulgated by NOAA Fisheries. This fishery will occur between the dates and times listed in paragraphs (2) and (3) of this section.
- (6) Notwithstanding paragraph (4) of this Section, an incidental catch fishery is authorized during salmon troll seasons in IPHC Regulatory Area 2A in accordance with regulations promulgated by NOAA Fisheries. This fishery will occur between the dates and times listed in paragraphs (2) and (3) of this section.

² The non-tribal directed fishery is restricted to waters that are south of Point Chehalis, Washington, (46°53.30' N. latitude) under regulations promulgated by NOAA Fisheries and published in the Federal Register.

³ The incidental fishery during the directed, fixed gear sablefish season is restricted to waters that are north of Point Chehalis, Washington, (46°53.30' N. latitude) under regulations promulgated by NOAA Fisheries at 50 CFR 300.63. Landing restrictions for Pacific halibut retention in the fixed gear sablefish fishery can be found at 50 CFR 660.231.

APPENDIX VI

**IPHC FISHERY REGULATIONS: RECREATIONAL (SPORT) FISHING FOR PACIFIC HALIBUT—
IPHC REGULATORY AREAS 2C, 3A, 3B, 4A, 4B, 4C, 4D, 4E (SECT. 28) – CHARTER
MANAGEMENT MEASURES IN IPHC REGULATORY AREAS 2C AND 3A (USA)**

IPHC-2025-AM101-PropB1

**28. Recreational (Sport) Fishing for Pacific Halibut—IPHC Regulatory Areas 2C, 3A,
3B, 4A, 4B, 4C, 4D, 4E**

- (1) [...]
- (i) in IPHC Regulatory Areas 2C and 3A:
- (1) a “charter halibut permit” as defined at 50 CFR 300.61 may only be used for one charter vessel fishing trip in which Pacific halibut are caught and retained per calendar day;
- (2) a “charter vessel” as defined at 50 CFR 300.61 may only be used for one charter vessel fishing trip in which Pacific halibut are caught and retained per calendar day; and
- (3) for purposes of subsections (1) and (2) of this paragraph, a “charter vessel fishing trip” is defined as the time period between:
- (a) the first time Pacific halibut are caught and retained on a charter vessel by a charter vessel angler (as defined at 50 CFR 300.61); and (b) whichever comes first: 2359 (Alaska local time) on the same calendar day that the charter vessel fishing trip began; when any charter vessel angler is offloaded from the charter vessel; or when Pacific halibut are offloaded from the charter vessel.
- (2) For guided recreational (sport) fishing (as referred to in 50 CFR 300.65) in IPHC Regulatory Area 2C:
- (a) no person on board a charter vessel (as referred to in 50 CFR 300.65) shall catch and retain more than one Pacific halibut per calendar day;
- (b) no person on board a charter vessel (as referred to in 50 CFR 300.65) shall catch and retain any Pacific halibut that with head on is greater than 37 inches (94.0 cm) and less than 80 inches (203.2 cm) as measured in a straight line, passing over the pectoral fin from the tip of the lower jaw with mouth closed, to the extreme end of the middle of the tail; and
- (c) no person on board a charter vessel may catch and retain Pacific halibut on any Tuesday from 13 May to 9 September in 2025.
- (3) For guided recreational (sport) fishing (as referred to in 50 CFR 300.65) in IPHC Regulatory Area 3A:
- (a) no person on board a charter vessel (as referred to in 50 CFR 300.65) shall catch and retain more than two Pacific halibut per calendar day; and
- (b) at least one of the retained Pacific halibut must have a head-on length of no more than 27 inches (68.6 cm) as measured in a straight line, passing over the pectoral fin from the tip of the lower jaw with mouth closed, to the extreme end of the middle of the tail. If a person sport fishing on a charter vessel in IPHC Regulatory Area 3A retains only one Pacific halibut in a calendar day, that Pacific halibut may be of any length; and
- (c) no person on board a charter vessel may catch and retain Pacific halibut on any Tuesday or Wednesday in 2025.

APPENDIX VII FY2025 BUDGET: REVISED AND ADOPTED

(1 Oct. 2024 to 30 Sept. 2025)

FY2025: Proposed for FAC101 revision Account Number	10 - General FY2025	20 - Research FY2025	30 - Statistics FY2025	35 - AK Cost-Recovery FY2025	TOTAL (10,20,30, 35) FY2025	40 - FIS S FY2025	TOTAL (All Funds) FY2025
Income							
40000 Contracting Party Contributions							
40000.01 - Canada	\$ -	\$ -	\$ -	\$ -	\$ 970,606.61	\$ -	\$ 970,606.61
40000.02 - United States of America	\$ -	\$ -	\$ -	\$ -	\$ 4,421,652.32	\$ -	\$ 4,421,652.32
40000.03 - Canada supplementary	\$ -	\$ -	\$ -	\$ -	\$ -	\$ -	\$ -
40000.04 - United States of America supplementary	\$ -	\$ -	\$ -	\$ -	\$ -	\$ 387,000.00	\$ 387,000.00
40000 - Contracting Party Contributions	\$ 3,139,748.84	\$ 1,170,457.48	\$ 1,082,052.61	\$ -	\$ 5,392,258.93	\$ 387,000.00	\$ 5,779,258.93
40055 - Headquarters (Lease and Maintenance)	\$ 458,608.60	\$ -	\$ -	\$ -	\$ 458,608.60	\$ -	\$ 458,608.60
40055 - Headquarters (Lease & Maintenance)	\$ 458,608.60	\$ -	\$ -	\$ -	\$ 458,608.60	\$ -	\$ 458,608.60
40060 Other Income							
40060.06 - Rent - Dutch Harbor	\$ -	\$ -	\$ -	\$ 5,000.00	\$ 5,000.00	\$ -	\$ 5,000.00
40060 - Other Income	\$ -	\$ -	\$ -	\$ 5,000.00	\$ 5,000.00	\$ -	\$ 5,000.00
40100 Grants, Contracts & Agreements							
40100.01 - 802 - Directed Commercial Catch Sampling of Pacific halibut in Alaska	\$ -	\$ -	\$ -	\$ 999,847.00	\$ 999,847.00	\$ -	\$ 999,847.00
40100.02 - MoU WDFW Rock fish sampling	\$ -	\$ -	\$ -	\$ -	\$ -	\$ 37,803.00	\$ 37,803.00
40100.09 - 809 - BREP NA23	\$ -	\$ -	\$ -	\$ -	\$ -	\$ -	\$ -
40100.09 - Supplementary funding	\$ -	\$ -	\$ -	\$ -	\$ -	\$ -	\$ -
40100 - Grants, Contracts & Agreements	\$ -	\$ -	\$ -	\$ 999,847.00	\$ 999,847.00	\$ 37,803.00	\$ 1,037,650.00
40200 Interest Income							
40200.01 - Bank Interest	\$ 100,000.00	\$ -	\$ -	\$ -	\$ 100,000.00	\$ -	\$ 100,000.00
Total 40200 - Interest Income	\$ 100,000.00	\$ -	\$ -	\$ -	\$ 100,000.00	\$ -	\$ 100,000.00
40350 Fish Sales							
40350.01 - Fish Sales - Pacific Halibut	\$ -	\$ -	\$ -	\$ -	\$ -	\$ 1,262,000.00	\$ 1,262,000.00
40350.02 - Fish Sales - Byproduct	\$ -	\$ -	\$ -	\$ -	\$ -	\$ 55,000.00	\$ 55,000.00
40350 - Fish Sales	\$ -	\$ -	\$ -	\$ -	\$ -	\$ 1,317,000.00	\$ 1,317,000.00
Total Income	\$ 3,698,357.44	\$ 1,170,457.48	\$ 1,082,052.61	\$ 1,004,847.00	\$ 6,955,714.53	\$ 1,741,803.00	\$ 8,697,517.53
Expense							
Personnel Expenses							
50000 - Salary & Wages	\$ 1,715,856.15	\$ 674,503.01	\$ 759,373.33	\$ 539,569.19	\$ 3,689,301.68	\$ 659,354.80	\$ 4,348,656.48
50100 - Benefits	\$ 671,677.39	\$ 230,518.91	\$ 217,347.68	\$ 174,649.27	\$ 1,294,193.25	\$ 156,180.39	\$ 1,450,373.64
50200 - Training & Education	\$ 34,000.00	\$ -	\$ 5,847.75	\$ 23,132.98	\$ 62,980.73	\$ 20,000.00	\$ 82,980.73
50300 - Personnel Related Expenses	\$ 5,122.50	\$ -	\$ 2,006.00	\$ 3,679.55	\$ 10,808.05	\$ 7,100.00	\$ 17,908.05
Total Personnel Expenses	\$ 2,426,656.04	\$ 905,021.92	\$ 984,574.76	\$ 741,030.99	\$ 5,057,283.71	\$ 842,635.19	\$ 5,899,918.90
Operational Expenses							
5000 - Publications	\$ 2,500.00	\$ 12,500.00	\$ 640.00	\$ 202.65	\$ 15,842.65	\$ -	\$ 15,842.65
51100 - Mailing and Shipping	\$ 4,800.00	\$ 11,745.00	\$ 1,811.25	\$ 3,008.66	\$ 21,364.91	\$ 60,000.00	\$ 81,364.91
51200 - Travel	\$ 61,000.00	\$ 26,232.00	\$ 12,316.00	\$ 40,239.49	\$ 139,787.49	\$ 70,258.75	\$ 210,046.24
51300 - IPHC Meetings	\$ 183,100.00	\$ -	\$ -	\$ -	\$ 183,100.00	\$ -	\$ 183,100.00
51400 - Technology	\$ 136,943.36	\$ 4,383.65	\$ 45,790.70	\$ 5,244.00	\$ 192,361.71	\$ 5,775.00	\$ 198,136.71
Total Operational Expenses	\$ 388,343.36	\$ 54,860.65	\$ 60,557.95	\$ 48,694.79	\$ 552,456.75	\$ 136,033.75	\$ 688,490.50
Fees and Contract Expenses							
52000 - Professional Fees	\$ 237,486.00	\$ -	\$ -	\$ 3,377.16	\$ 240,863.16	\$ 1,000.00	\$ 241,863.16
52100 - Vessel Expenses	\$ -	\$ -	\$ -	\$ -	\$ -	\$ 220,000.00	\$ 220,000.00
52200 - Other Fees and Charges	\$ 48,027.73	\$ -	\$ 1,321.27	\$ 9,737.86	\$ 59,086.86	\$ 32,760.00	\$ 91,846.86
52300 - Leases and Contracts	\$ 22,780.00	\$ 40,384.67	\$ -	\$ 14,100.69	\$ 77,265.36	\$ 1,103,000.00	\$ 1,180,265.36
54000 - Communications	\$ 31,651.48	\$ -	\$ 2,433.55	\$ -	\$ 34,085.03	\$ 2,000.00	\$ 36,085.03
Total Fees and Contract Expenses	\$ 339,945.21	\$ 40,384.67	\$ 3,754.82	\$ 27,215.71	\$ 411,300.41	\$ 1,358,760.00	\$ 1,770,060.41
Facilities and Equipment Expenses							
54000 - Equipment Expense	\$ 3,000.00	\$ 5,000.00	\$ 4,856.95	\$ 5,324.10	\$ 18,181.05	\$ 15,525.00	\$ 33,706.05
54000 - Supplies Expense	\$ 31,500.00	\$ 164,155.25	\$ 1,714.88	\$ 6,095.78	\$ 203,465.91	\$ 274,517.50	\$ 477,983.41
54000 - Maintenance and Utilities	\$ 33,035.00	\$ -	\$ 2,574.80	\$ 899.73	\$ 36,509.53	\$ 1,035.00	\$ 37,544.53
54000 - Facility Rentals	\$ 460,161.10	\$ 1,035.00	\$ 24,018.45	\$ 37,513.41	\$ 522,727.96	\$ 19,002.50	\$ 541,730.46
Total Facilities and Equipment Expenses	\$ 527,696.10	\$ 170,190.25	\$ 33,165.08	\$ 49,833.02	\$ 780,884.45	\$ 310,080.00	\$ 1,090,964.45
Other Expenses							
55000 - Budget Contingency	\$ 111,061.93	\$ -	\$ -	\$ 42,727.28	\$ 153,789.21	\$ -	\$ 153,789.21
55250 - Indirect costs	\$ (95,345.20)	\$ -	\$ -	\$ 95,345.20	\$ -	\$ -	\$ -
Other Expenses	\$ 15,716.73	\$ -	\$ -	\$ 138,072.48	\$ 153,789.21	\$ -	\$ 153,789.21
Total Expense	\$ 3,698,357.44	\$ 1,170,457.48	\$ 1,082,052.61	\$ 1,004,847.00	\$ 6,955,714.53	\$ 2,647,508.94	\$ 9,603,223.47
Net Income (Loss)	\$ (0.00)	\$ -	\$ (0.00)	\$ 0.00	\$ (0.00)	\$ (905,705.94)	\$ (905,705.94)

**APPENDIX VIII
FY2026: PROPOSED**

(1 Oct. 2025 to 30 Sept. 2026)

FY2026: Proposed for FAC101 Account Number	10 - General FY2026	20 - Research FY2026	30 - Statistics FY2026	35 - AK Cost-Recovery FY2026	TOTAL (10,20,30,35) FY2026	40 - FISS FY2026	TOTAL (All Funds) FY2026
Income							
40000 Contracting Party Contributions							
40000.01 - Canada	\$ -	\$ -	\$ -	\$ -	\$ 1,019,136.94	\$ -	\$ 1,019,136.94
40000.02 - United States of America	\$ -	\$ -	\$ -	\$ -	\$ 4,642,734.94	\$ -	\$ 4,642,734.94
40000.03 - Canada supplementary	\$ -	\$ -	\$ -	\$ -	\$ -	\$ -	\$ -
40000.04 - United States of America supplementary	\$ -	\$ -	\$ -	\$ -	\$ -	\$ -	\$ -
40000 - Contracting Party Contributions	\$ 3,227,218.43	\$ 1,236,762.37	\$ 1,147,891.08	\$ -	\$ 5,661,871.88	\$ -	\$ 5,661,871.88
40055 - Headquarters (Lease and Maintenance)	\$ 364,162.98	\$ -	\$ -	\$ -	\$ 364,162.98	\$ -	\$ 364,162.98
40055 - Headquarters (Lease & Maintenance)	\$ 364,162.98	\$ -	\$ -	\$ -	\$ 364,162.98	\$ -	\$ 364,162.98
40060 Other Income							
40060.06 - Rent - Dutch Harbor	\$ -	\$ -	\$ -	\$ 5,305.00	\$ 5,305.00	\$ -	\$ 5,305.00
40060 - Other Income	\$ -	\$ -	\$ -	\$ 5,305.00	\$ 5,305.00	\$ -	\$ 5,305.00
40100 Grants, Contracts & Agreements							
40100.01 - 802 - Directed Commercial Catch Sampling of Pacific halibut in Alaska	\$ -	\$ -	\$ -	\$ 1,054,530.00	\$ 1,054,530.00	\$ -	\$ 1,054,530.00
40100.02 - MoU WDFW Rockfish sampling	\$ -	\$ -	\$ -	\$ -	\$ -	\$ 39,693.15	\$ 39,693.15
40100.09 - 809 - BREP NA23	\$ -	\$ -	\$ -	\$ -	\$ -	\$ -	\$ -
40100.07 - Supplementary funding	\$ -	\$ -	\$ -	\$ 75,466.61	\$ 75,466.61	\$ -	\$ 75,466.61
40100 - Grants, Contracts & Agreements	\$ -	\$ -	\$ -	\$ 1,129,996.61	\$ 1,129,996.61	\$ 39,693.15	\$ 1,169,689.76
40200 Interest Income							
40200.01 - Bank Interest	\$ 80,000.00	\$ -	\$ -	\$ -	\$ 80,000.00	\$ -	\$ 80,000.00
Total 40200 - Interest Income	\$ 80,000.00	\$ -	\$ -	\$ -	\$ 80,000.00	\$ -	\$ 80,000.00
40350 Fish Sales							
40350.01 - Fish Sales - Pacific Halibut	\$ -	\$ -	\$ -	\$ -	\$ -	\$ 1,306,170.00	\$ 1,306,170.00
40350.02 - Fish Sales - Byproduct	\$ -	\$ -	\$ -	\$ -	\$ -	\$ 56,925.00	\$ 56,925.00
40350 - Fish Sales	\$ -	\$ -	\$ -	\$ -	\$ -	\$ 1,363,095.00	\$ 1,363,095.00
Total Income	\$ 3,671,381.41	\$ 1,236,762.37	\$ 1,147,891.08	\$ 1,135,301.61	\$ 7,191,336.47	\$ 1,402,788.15	\$ 8,594,124.62
Expense							
Personnel Expenses							
50000 - Salary & Wages	\$ 1,801,348.96	\$ 708,228.16	\$ 797,342.00	\$ 566,547.65	\$ 3,873,466.76	\$ 692,247.54	\$ 4,565,714.30
50100 - Benefits	\$ 713,763.56	\$ 254,245.91	\$ 238,428.46	\$ 193,760.48	\$ 1,400,198.40	\$ 169,100.41	\$ 1,569,298.81
50200 - Training & Education	\$ 33,000.00	\$ -	\$ 6,052.42	\$ 24,544.09	\$ 63,596.52	\$ 20,700.00	\$ 84,296.52
50300 - Personnel Related Expenses	\$ 5,249.29	\$ -	\$ 2,076.21	\$ 3,904.00	\$ 11,229.50	\$ 7,348.50	\$ 18,578.00
Total Personnel Expenses	\$ 2,553,361.80	\$ 962,474.07	\$ 1,043,899.09	\$ 788,756.23	\$ 5,348,491.18	\$ 889,396.45	\$ 6,237,887.63
Operational Expenses							
5000 - Publications	\$ 1,500.00	\$ 12,500.00	\$ 640.00	\$ 215.01	\$ 14,855.01	\$ -	\$ 14,855.01
51100 - Mailing and Shipping	\$ 4,968.00	\$ 12,156.08	\$ 1,874.64	\$ 3,192.18	\$ 22,190.90	\$ 62,100.00	\$ 84,290.90
51200 - Travel	\$ 72,025.00	\$ 27,150.12	\$ 12,747.06	\$ 42,694.09	\$ 154,616.27	\$ 72,717.81	\$ 227,334.08
51300 - IPHC Meetings	\$ 189,473.50	\$ -	\$ -	\$ -	\$ 189,473.50	\$ -	\$ 189,473.50
51400 - Technology	\$ 141,736.38	\$ 4,537.08	\$ 47,393.37	\$ 5,563.88	\$ 199,230.71	\$ 5,977.13	\$ 205,207.84
Total Operational Expenses	\$ 409,702.88	\$ 56,343.27	\$ 62,655.08	\$ 51,665.18	\$ 580,366.40	\$ 140,794.93	\$ 721,161.34
Fees and Contract Expenses							
52000 - Professional Fees	\$ 245,098.01	\$ -	\$ -	\$ 3,583.17	\$ 248,681.18	\$ 1,035.00	\$ 249,716.18
52100 - Vessel Expenses	\$ -	\$ -	\$ -	\$ -	\$ -	\$ 227,700.00	\$ 227,700.00
52200 - Other Fees and Charges	\$ 50,059.66	\$ -	\$ 1,387.33	\$ 10,331.87	\$ 61,778.86	\$ 34,398.00	\$ 96,176.86
52300 - Leases and Contracts	\$ 25,329.36	\$ 41,798.13	\$ 3,105.00	\$ 14,960.83	\$ 85,193.32	\$ 1,141,605.00	\$ 1,226,798.32
54000 - Communications	\$ 32,759.28	\$ -	\$ 2,518.72	\$ -	\$ 35,278.01	\$ 2,070.00	\$ 37,348.01
Total Fees and Contract Expenses	\$ 353,246.31	\$ 41,798.13	\$ 7,011.06	\$ 28,875.87	\$ 430,931.36	\$ 1,406,808.00	\$ 1,837,739.36
Facilities and Equipment Expenses							
54000 - Equipment Expense	\$ 3,105.00	\$ 5,175.00	\$ 5,026.95	\$ 5,648.87	\$ 18,955.82	\$ 16,068.38	\$ 35,024.19
54000 - Supplies Expense	\$ 32,095.00	\$ 169,900.68	\$ 1,774.90	\$ 6,467.63	\$ 210,238.21	\$ 284,125.61	\$ 494,363.82
54000 - Maintenance and Utilities	\$ 34,191.23	\$ -	\$ 2,664.92	\$ 954.61	\$ 37,810.75	\$ 1,071.23	\$ 38,881.98
54000 - Facility Rentals	\$ 365,769.82	\$ 1,071.23	\$ 24,859.10	\$ 39,801.73	\$ 431,501.87	\$ 19,667.59	\$ 451,169.46
Total Facilities and Equipment Expenses	\$ 435,161.04	\$ 176,146.90	\$ 34,325.86	\$ 52,872.84	\$ 698,506.65	\$ 320,932.80	\$ 1,019,439.45
Other Expenses							
55000 - Budget Contingency	\$ 22,559.75	\$ -	\$ -	\$ 110,481.12	\$ 133,040.87	\$ -	\$ 133,040.87
55250 - Indirect costs	\$ (102,650.38)	\$ -	\$ -	\$ 102,650.38	\$ -	\$ -	\$ -
Other Expenses	\$ (80,090.63)	\$ -	\$ -	\$ 213,131.50	\$ 133,040.87	\$ -	\$ 133,040.87
Total Expense	\$ 3,671,381.41	\$ 1,236,762.37	\$ 1,147,891.08	\$ 1,135,301.61	\$ 7,191,336.47	\$ 2,757,932.18	\$ 9,949,268.65
Net Income (Loss)	\$ 0.00	\$ (0.00)	\$ (0.00)	\$ 0.00	\$ 0.00	\$ (1,355,144.03)	\$ (1,355,144.03)

APPENDIX IX FY2027 INDICATIVE BUDGET

(1 Oct. 2026 to 30 Sept. 2027)

FY2027: Proposed for FAC101 Account Number	10 - General FY2027	20 - Research FY2027	30 - Statistics FY2027	35 - AK Cost-Recovery FY2027	TOTAL (10,20,30, 35) FY2027	40 - FISS FY2027	TOTAL (All Funds) FY2027
Income							
40000 Contracting Party Contributions							
40000.01 - Canada	\$ -	\$ -	\$ -	\$ -	\$ 1,070,093.78	\$ -	\$ 1,070,093.78
40000.02 - United States of America	\$ -	\$ -	\$ -	\$ -	\$ 4,874,871.69	\$ -	\$ 4,874,871.69
40000.03 - Canada supplementary	\$ -	\$ -	\$ -	\$ -	\$ -	\$ -	\$ -
40000.04 - United States of America supplementary	\$ -	\$ -	\$ -	\$ -	\$ -	\$ -	\$ -
40000 - Contracting Party Contributions	\$ 3,445,298.49	\$ 1,296,431.40	\$ 1,203,235.59	\$ -	\$ 5,944,965.47	\$ -	\$ 5,944,965.47
40055 - Headquarters (Lease and Maintenance)	\$ 374,010.34	\$ -	\$ -	\$ -	\$ 374,010.34	\$ -	\$ 374,010.34
40055 - Headquarters (Lease & Maintenance)	\$ 374,010.34	\$ -	\$ -	\$ -	\$ 374,010.34	\$ -	\$ 374,010.34
40060 Other Income							
40060.06 - Rent - Dutch Harbor	\$ -	\$ -	\$ -	\$ 5,628.61	\$ 5,628.61	\$ -	\$ 5,628.61
40060 - Other Income	\$ -	\$ -	\$ -	\$ 5,628.61	\$ 5,628.61	\$ -	\$ 5,628.61
40100 Grants, Contracts & Agreements							
40100.01 - 802 - Directed Commercial Catch Sampling of Pacific halibut in Alaska	\$ -	\$ -	\$ -	\$ 1,178,754.14	\$ 1,178,754.14	\$ -	\$ 1,178,754.14
40100.02 - MoU WDFW Rockfish sampling	\$ -	\$ -	\$ -	\$ -	\$ -	\$ 41,677.81	\$ 41,677.81
40100.09 - 809 - BREP NA23	\$ -	\$ -	\$ -	\$ -	\$ -	\$ -	\$ -
40100.07 - Supplementary funding	\$ -	\$ -	\$ -	\$ -	\$ -	\$ -	\$ -
40100 - Grants, Contracts & Agreements	\$ -	\$ -	\$ -	\$ 1,178,754.14	\$ 1,178,754.14	\$ 41,677.81	\$ 1,220,431.95
40200 Interest Income							
40200.01 - Bank Interest	\$ 80,000.00	\$ -	\$ -	\$ -	\$ 80,000.00	\$ -	\$ 80,000.00
Total 40200 - Interest Income	\$ 80,000.00	\$ -	\$ -	\$ -	\$ 80,000.00	\$ -	\$ 80,000.00
40350 Fish Sales							
40350.01 - Fish Sales - Pacific Halibut	\$ -	\$ -	\$ -	\$ -	\$ -	\$ 1,363,207.67	\$ 1,363,207.67
40350.02 - Fish Sales - Byproduct	\$ -	\$ -	\$ -	\$ -	\$ -	\$ 58,917.38	\$ 58,917.38
40350 - Fish Sales	\$ -	\$ -	\$ -	\$ -	\$ -	\$ 1,422,125.05	\$ 1,422,125.05
Total Income	\$ 3,899,308.83	\$ 1,296,431.40	\$ 1,203,235.59	\$ 1,184,382.75	\$ 7,583,358.57	\$ 1,463,802.85	\$ 9,047,161.42
Expense							
Personnel Expenses							
50000 - Salary & Wages	\$ 1,891,116.41	\$ 743,639.57	\$ 837,209.10	\$ 594,875.03	\$ 4,066,840.10	\$ 726,784.92	\$ 4,793,625.02
50100 - Benefits	\$ 775,061.10	\$ 269,340.94	\$ 250,632.11	\$ 203,897.40	\$ 1,498,931.55	\$ 183,185.94	\$ 1,682,117.49
50200 - Training & Education	\$ 33,000.00	\$ -	\$ 6,264.26	\$ 26,041.28	\$ 65,305.54	\$ 21,424.50	\$ 86,730.04
50300 - Personnel Related Expenses	\$ 5,380.51	\$ -	\$ 1,500.00	\$ 4,142.14	\$ 11,022.66	\$ 7,605.70	\$ 18,628.35
Total Personnel Expenses	\$ 2,704,558.02	\$ 1,012,980.50	\$ 1,095,605.46	\$ 828,955.86	\$ 5,642,099.85	\$ 939,001.05	\$ 6,581,100.90
Operational Expenses							
5000 - Publications	\$ 1,500.00	\$ 12,500.00	\$ 640.00	\$ 228.13	\$ 14,868.13	\$ -	\$ 14,868.13
51100 - Mailing and Shipping	\$ 5,141.88	\$ 12,581.54	\$ 1,940.26	\$ 3,386.91	\$ 23,050.58	\$ 64,273.50	\$ 87,324.08
51200 - Travel	\$ 74,493.38	\$ 28,100.37	\$ 13,193.21	\$ 45,298.43	\$ 161,085.39	\$ 75,262.93	\$ 236,348.32
51300 - IPHC Meetings	\$ 205,022.29	\$ -	\$ -	\$ -	\$ 205,022.29	\$ -	\$ 205,022.29
51400 - Technology	\$ 146,697.15	\$ 4,695.88	\$ 49,052.14	\$ 5,903.28	\$ 206,348.45	\$ 6,186.32	\$ 212,534.77
Total Operational Expenses	\$ 432,854.70	\$ 57,877.79	\$ 64,825.61	\$ 54,816.75	\$ 610,374.84	\$ 145,722.75	\$ 756,097.59
Fees and Contract Expenses							
52000 - Professional Fees	\$ 252,976.44	\$ -	\$ -	\$ 3,801.74	\$ 256,778.18	\$ 1,071.23	\$ 257,849.41
52100 - Vessel Expenses	\$ -	\$ -	\$ -	\$ -	\$ -	\$ 235,669.50	\$ 235,669.50
52200 - Other Fees and Charges	\$ 52,180.25	\$ -	\$ 1,456.70	\$ 10,962.11	\$ 64,599.06	\$ 36,117.90	\$ 100,716.96
52300 - Leases and Contracts	\$ 26,215.89	\$ 43,261.06	\$ 3,213.68	\$ 15,873.44	\$ 88,564.07	\$ 1,181,561.18	\$ 1,270,125.24
54000 - Communications	\$ 33,905.86	\$ -	\$ 2,606.88	\$ -	\$ 36,512.74	\$ 2,142.45	\$ 38,655.19
Total Fees and Contract Expenses	\$ 365,278.44	\$ 43,261.06	\$ 7,277.25	\$ 30,637.30	\$ 446,454.05	\$ 1,456,562.25	\$ 1,903,016.30
Facilities and Equipment Expenses							
54000 - Equipment Expense	\$ 3,213.68	\$ 5,356.13	\$ 5,202.89	\$ 5,993.45	\$ 19,766.14	\$ 16,630.77	\$ 36,396.91
54000 - Supplies Expense	\$ 32,710.83	\$ 175,847.20	\$ 1,837.02	\$ 6,862.15	\$ 217,257.20	\$ 294,070.01	\$ 511,327.21
54000 - Maintenance and Utilities	\$ 35,387.92	\$ -	\$ 2,758.19	\$ 1,012.84	\$ 39,158.95	\$ 1,108.72	\$ 40,267.67
54000 - Facility Rentals	\$ 375,673.42	\$ 1,108.72	\$ 25,729.16	\$ 42,229.64	\$ 444,740.94	\$ 20,355.95	\$ 465,096.89
Total Facilities and Equipment Expenses	\$ 446,985.83	\$ 182,312.05	\$ 35,527.27	\$ 56,098.08	\$ 664,825.15	\$ 332,165.45	\$ 996,990.60
Other Expenses							
55000 - Budget Contingency	\$ 46,682.64	\$ -	\$ -	\$ 116,823.95	\$ 163,506.59	\$ -	\$ 163,506.59
55250 - Indirect costs	\$ (97,050.80)	\$ -	\$ -	\$ 97,050.80	\$ -	\$ -	\$ -
Other Expenses	\$ (50,368.16)	\$ -	\$ -	\$ 213,874.75	\$ 163,506.59	\$ -	\$ 163,506.59
Total Expense	\$ 3,899,308.83	\$ 1,296,431.40	\$ 1,203,235.59	\$ 1,184,382.75	\$ 7,583,358.56	\$ 2,873,451.50	\$ 10,456,810.07
Net Income (Loss)	\$ 0.00	\$ 0.00	\$ 0.00	\$ (0.00)	\$ 0.00	\$ (1,409,648.65)	\$ (1,409,648.65)

APPENDIX X FY2028 INDICATIVE BUDGET

(1 Oct. 2027 to 30 Sept. 2028)

FY2028: Proposed for FAC101 Account Number	10 - General FY2028	20 - Research FY2028	30 - Statistics FY2028	35 - AK Cost-Recovery FY2028	TOTAL (10,20,30, 35) FY2028	40 - FISS FY2028	TOTAL (All Funds) FY2028
Income							
40000 Contracting Party Contributions							
40000.01 - Canada	\$ -	\$ -	\$ -	\$ -	\$ 1,123,598.47	\$ -	\$ 1,123,598.47
40000.02 - United States of America	\$ -	\$ -	\$ -	\$ -	\$ 5,118,615.27	\$ -	\$ 5,118,615.27
40000.03 - Canada supplementary	\$ -	\$ -	\$ -	\$ -	\$ -	\$ -	\$ -
40000.04 - United States of America supplementary	\$ -	\$ -	\$ -	\$ -	\$ -	\$ -	\$ -
40000 - Contracting Party Contributions	\$ 3,613,140.61	\$ 1,364,973.17	\$ 1,264,099.96	\$ -	\$ 6,242,213.74	\$ -	\$ 6,242,213.74
40055 - Headquarters (Lease and Maintenance)	\$ 384,037.24	\$ -	\$ -	\$ -	\$ 384,037.24	\$ -	\$ 384,037.24
40055 - Headquarters (Lease & Maintenance)	\$ 384,037.24	\$ -	\$ -	\$ -	\$ 384,037.24	\$ -	\$ 384,037.24
40060 Other Income							
40060.06 - Rent - Dutch Harbor	\$ -	\$ -	\$ -	\$ 5,971.95	\$ 5,971.95	\$ -	\$ 5,971.95
40060 - Other Income	\$ -	\$ -	\$ -	\$ 5,971.95	\$ 5,971.95	\$ -	\$ 5,971.95
40100 Grants, Contracts & Agreements							
40100.01 - 802 - Directed Commercial Catch Sampling of Pacific halibut in Alaska	\$ -	\$ -	\$ -	\$ 1,139,768.38	\$ 1,139,768.38	\$ -	\$ 1,139,768.38
40100.02 - MoU WDFW Rockfish sampling	\$ -	\$ -	\$ -	\$ -	\$ -	\$ 43,761.70	\$ 43,761.70
40100.09 - 809 - BREP NA23	\$ -	\$ -	\$ -	\$ -	\$ -	\$ -	\$ -
40100.07 - Supplementary funding	\$ -	\$ -	\$ -	\$ -	\$ -	\$ -	\$ -
40100 - Grants, Contracts & Agreements	\$ -	\$ -	\$ -	\$ 1,139,768.38	\$ 1,139,768.38	\$ 43,761.70	\$ 1,183,530.08
40200 Interest Income							
40200.01 - Bank Interest	\$ 90,000.00	\$ -	\$ -	\$ -	\$ 90,000.00	\$ -	\$ 90,000.00
Total 40200 - Interest Income	\$ 90,000.00	\$ -	\$ -	\$ -	\$ 90,000.00	\$ -	\$ 90,000.00
40350 Fish Sales							
40350.01 - Fish Sales - Pacific Halibut	\$ -	\$ -	\$ -	\$ -	\$ -	\$ 1,422,241.66	\$ 1,422,241.66
40350.02 - Fish Sales - Byproduct	\$ -	\$ -	\$ -	\$ -	\$ -	\$ 60,979.48	\$ 60,979.48
40350 - Fish Sales	\$ -	\$ -	\$ -	\$ -	\$ -	\$ 1,483,221.14	\$ 1,483,221.14
Total Income	\$ 4,087,177.85	\$ 1,364,973.17	\$ 1,264,099.96	\$ 1,145,740.33	\$ 7,861,991.31	\$ 1,526,982.84	\$ 9,388,974.15
Expense							
Personnel Expenses							
50000 - Salary & Wages	\$ 1,985,372.23	\$ 780,821.55	\$ 875,434.84	\$ 624,618.78	\$ 4,266,247.40	\$ 756,697.88	\$ 5,022,945.27
50100 - Benefits	\$ 831,516.39	\$ 291,217.45	\$ 269,284.98	\$ 220,380.44	\$ 1,612,399.27	\$ 198,547.51	\$ 1,810,946.77
50200 - Training & Education	\$ 33,000.00	\$ -	\$ 6,483.50	\$ 27,629.80	\$ 67,113.31	\$ 22,174.36	\$ 89,287.67
50300 - Personnel Related Expenses	\$ 5,516.33	\$ -	\$ 1,500.00	\$ 4,394.82	\$ 11,411.15	\$ 4,434.87	\$ 15,846.02
Total Personnel Expenses	\$ 2,855,404.95	\$ 1,072,039.00	\$ 1,152,703.32	\$ 877,023.84	\$ 5,957,171.12	\$ 981,854.61	\$ 6,939,025.73
Operational Expenses							
5000 - Publications	\$ 1,500.00	\$ 12,500.00	\$ 640.00	\$ 200.00	\$ 14,840.00	\$ -	\$ 14,840.00
51100 - Mailing and Shipping	\$ 5,321.85	\$ 13,021.89	\$ 2,008.17	\$ 3,593.51	\$ 23,945.41	\$ 66,523.07	\$ 90,468.48
51200 - Travel	\$ 107,158.31	\$ 29,083.89	\$ 13,654.97	\$ 48,061.64	\$ 197,958.81	\$ 77,897.13	\$ 275,855.94
51300 - IPHC Meetings	\$ 205,022.29	\$ -	\$ -	\$ -	\$ 205,022.29	\$ -	\$ 205,022.29
51400 - Technology	\$ 151,831.55	\$ 4,860.23	\$ 50,768.97	\$ 6,263.38	\$ 213,724.13	\$ 6,402.85	\$ 220,126.98
Total Operational Expenses	\$ 470,834.00	\$ 59,466.01	\$ 67,072.10	\$ 58,118.53	\$ 655,490.64	\$ 150,823.05	\$ 806,313.69
Fees and Contract Expenses							
52000 - Professional Fees	\$ 261,130.62	\$ -	\$ -	\$ 4,033.65	\$ 265,164.27	\$ 1,108.72	\$ 266,272.98
52100 - Vessel Expenses	\$ -	\$ -	\$ -	\$ -	\$ -	\$ 243,917.93	\$ 243,917.93
52200 - Other Fees and Charges	\$ 54,393.49	\$ -	\$ 1,529.53	\$ 11,630.80	\$ 67,553.82	\$ 37,923.80	\$ 105,477.62
52300 - Leases and Contracts	\$ 27,133.44	\$ 44,775.20	\$ 3,326.15	\$ 16,841.72	\$ 92,076.52	\$ 1,222,915.82	\$ 1,314,992.34
54000 - Communications	\$ 35,092.56	\$ -	\$ 2,698.12	\$ -	\$ 37,790.68	\$ 2,217.44	\$ 40,008.12
Total Fees and Contract Expenses	\$ 377,750.11	\$ 44,775.20	\$ 7,553.81	\$ 32,506.17	\$ 462,585.29	\$ 1,508,083.70	\$ 1,970,668.99
Facilities and Equipment Expenses							
54000 - Equipment Expense	\$ 3,326.15	\$ 5,543.59	\$ 5,384.99	\$ 6,000.00	\$ 20,254.74	\$ 17,212.85	\$ 37,467.58
54000 - Supplies Expense	\$ 33,348.20	\$ 182,001.85	\$ 1,901.32	\$ 7,280.74	\$ 224,532.12	\$ 304,362.46	\$ 528,894.58
54000 - Maintenance and Utilities	\$ 36,626.50	\$ -	\$ 2,854.73	\$ 1,000.00	\$ 40,481.22	\$ 1,147.52	\$ 41,628.74
54000 - Facility Rentals	\$ 385,758.52	\$ 1,147.52	\$ 26,629.68	\$ 44,805.65	\$ 458,341.38	\$ 21,068.41	\$ 479,409.79
Total Facilities and Equipment Expenses	\$ 459,059.38	\$ 188,692.97	\$ 36,770.72	\$ 59,086.39	\$ 684,523.07	\$ 343,791.24	\$ 1,028,314.30
Other Expenses							
55000 - Budget Contingency	\$ 26,802.90	\$ -	\$ -	\$ 16,331.90	\$ 43,134.80	\$ -	\$ 43,134.80
55250 - Indirect costs	\$ (102,673.49)	\$ -	\$ -	\$ 102,673.49	\$ -	\$ -	\$ -
Other Expenses	\$ (75,870.59)	\$ -	\$ -	\$ 119,005.39	\$ 43,134.80	\$ -	\$ 43,134.80
Total Expense	\$ 4,087,177.85	\$ 1,364,973.17	\$ 1,264,099.96	\$ 1,145,740.33	\$ 7,861,991.30	\$ 2,984,552.60	\$ 10,846,543.90
Net Income (Loss)	\$ 0.00	\$ (0.00)	\$ 0.00	\$ 0.00	\$ 0.00	\$ (1,457,569.76)	\$ (1,457,569.75)

APPENDIX XI

**CONSOLIDATED SET OF RECOMMENDATIONS AND REQUESTS OF THE 101ST SESSION OF THE
IPHC ANNUAL MEETING (AM101) (27-31 JANUARY 2025)**

RECOMMENDATIONS

Nil

REQUESTS

Report of the 25th Session of the IPHC Research Advisory Board (RAB025)

AM101–Req.01 ([para. 21](#)) The Commission **REQUESTED** that additional Canadian membership beyond the two (2) current RAB members would be desirable and encouraged the Canadian delegation to explore recruiting new members from Canada.

Port Operations

AM101–Req.02 ([para. 30](#)) The Commission **REQUESTED** an annual compilation of reports of comments received by the IPHC’s Fisheries Data Specialists (Field) on current harvesting conditions.

Fisheries Data

AM101–Req.03 ([para. 32](#)) The Commission **REQUESTED** that the description of data on non-directed discard mortality for IPHC Regulatory Areas 3A and 3B be updated to align with the information provided in [IPHC-2025-AM101-NR02 Rev 1](#). (Note: A Rev 2 of this paper was published on 30 January 2025 to accommodate this request in-session: [IPHC-2025-AM101-08 Rev 2](#)).

Management Strategy Evaluation

AM101–Req.04 ([para. 53](#)) The Commission **REQUESTED** that the Secretariat facilitate informal intersessional workshops, consisting of Commissioners and key advisors, to review and consider the draft Harvest Strategy Policy, for adoption in mid-to-late 2025.

IPHC Fishery Regulations: Commercial Fishing Periods (Sect. 9) (Regulatory Area 2B)

AM101–Req.05 ([para. 88](#)) The Commission **REQUESTED** that the IPHC Secretariat prepare an analysis detailing the biological, logistical and socioeconomic effects of year-round fishing in Canada, including challenges related to data compilation and marketing implications, for presentation at AM102.

IPHC Fishery Regulations: Application of Commercial Fishery Limits (Sect. 12) – addressing concerns regarding localized depletion around St. Matthew Island

AM101–Req.06 ([para. 90](#)) The Commission **REQUESTED** that the Secretariat communicate the details of proposal [IPHC-2025-AM101-PropC2](#) to the NPFMC for their awareness and consideration and specifically to advise the NPFMC that the Commission considers that the proposal falls under the NPFMC purview.

IPHC Fishery Regulations

AM101–Req.07 ([para. 124](#)) The Commission **REQUESTED** that the IPHC Secretariat finalise and publish the IPHC *Pacific Halibut Fishery Regulations (2025)* as soon as possible, **NOTING** that only minor editorial and formatting changes are permitted beyond the decisions made by the Commission at the AM101.