

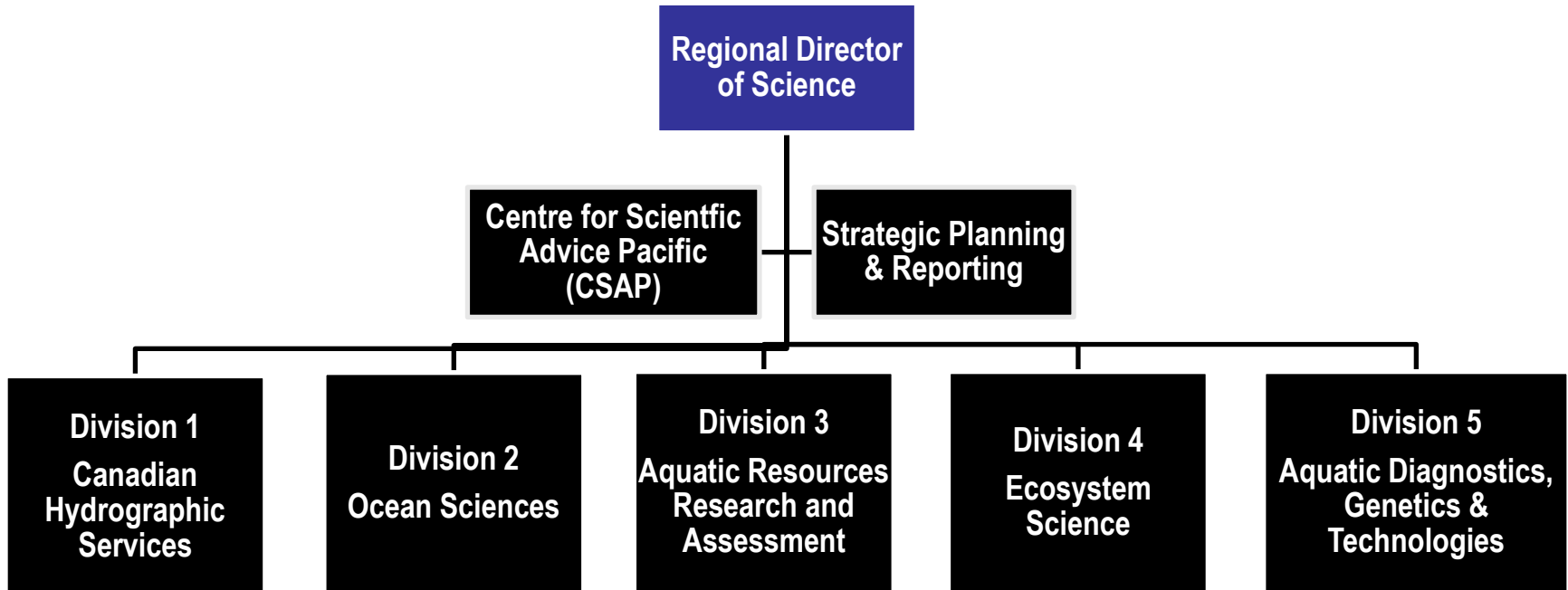


DFO Pacific Science Re-organisation

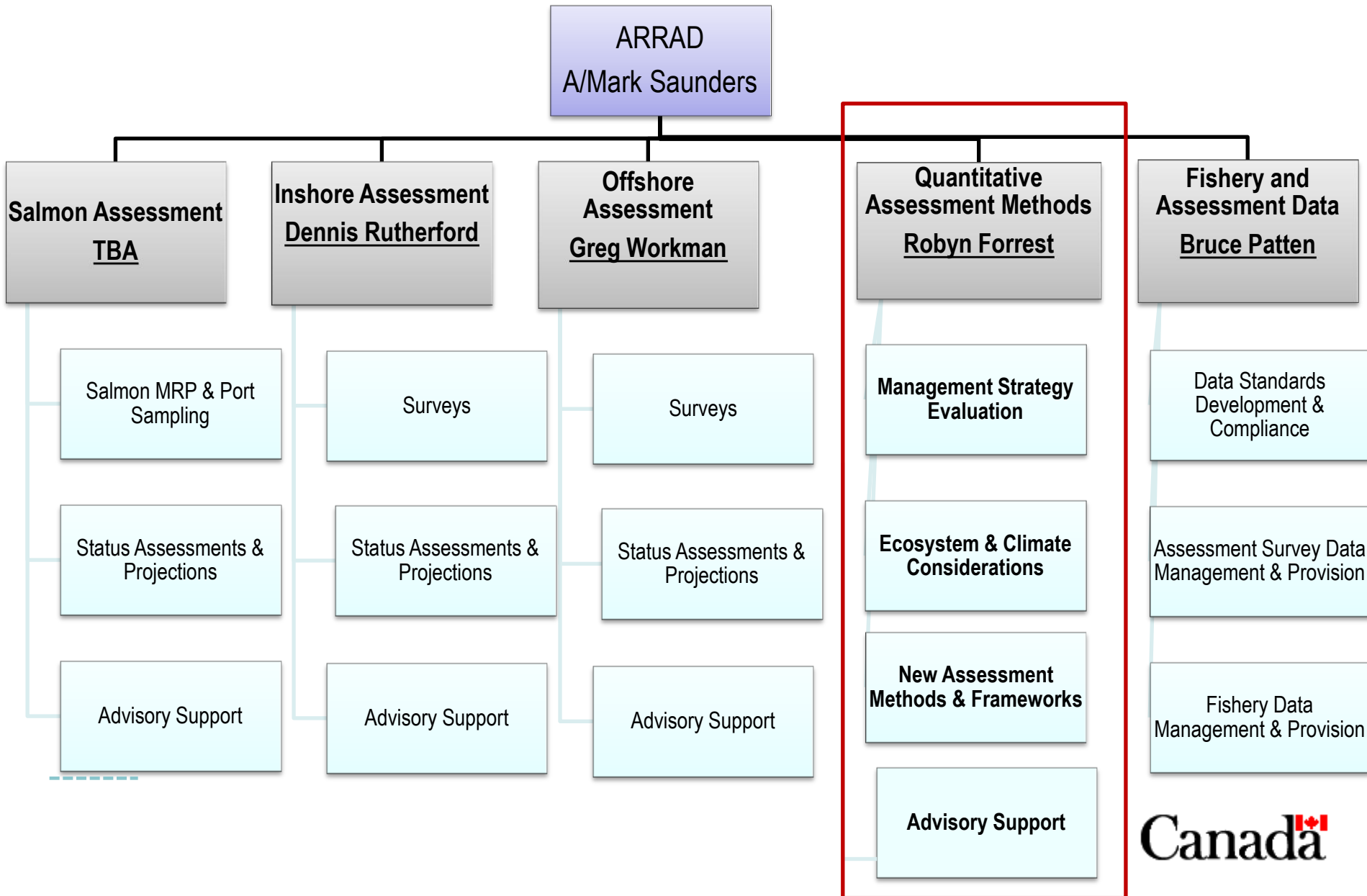
Robyn Forrest, Pacific Biological
Station

IPHC MSAB Meeting

Oct 26-27, 2016



Aquatic Resources Research and Assessment Division





Quantitative Assessment Methods: Staff

- **Robyn Forrest** (Groundfish MSE and Assessment)
- **Carrie Holt** (Salmon MSE and Wild Salmon Policy)
- **Rob Kronlund** (Sablefish MSE; National MSE Guidelines)
- **Jaclyn Cleary** (Herring MSE and Assessment)
- **Kendra Holt** (Salmon MSE and Assessment)
- **Andrew Edwards** (Hake MSE and Assessment)
- **Zane Zhang** (Invertebrate Statistics and Assessment)
- **Brooke Davis** (Salmon MSE)
- **Lisa Lacko** (Data and Spatial Analysis)
- **Sarah Hawkshaw** (Herring and Salmon MSE)
- **Lyse Godbout** (Salmon Ecology)
- **Wayne Hajas** (Invertebrate Statistics and Assessment)
- **Michael O'Brien** (Salmon Ecology Technician)
- **Post-Doctoral Fellow** (TBA) (Spatial Fishing Effort Analysis)



What do we do?

- We develop and apply quantitative methods to provide scientific advice for fisheries management and to enhance understanding of the marine ecosystem.
- We develop decision analysis tools to evaluate performance of fisheries management systems.
- We conduct primary research on ecology and management of marine finfish and invertebrate populations, in collaboration with regional, national and international scientists.



Who do we do it for?

- We provide scientific advice for fisheries managers and policy makers at the regional and national level.
- We provide scientific advice in support of negotiations with First Nations.
- We provide scientific information to commercial and recreational sector stakeholders, and to the academic and NGO community.
- We contribute to international best practices through our scientific publications and participation in national and international organisations, conferences and working groups.



Collaborative Opportunities

- Goals for collaboration
 - Learning, sharing, networking
 - Common language, approach and understanding among scientists, managers, First Nations and stakeholders
- Formal collaboration
 - Co-develop funding proposals
 - Appointments to working groups and advisory boards
 - Participation in workshops
- Informal collaboration
 - Attend meetings of other MSE processes
 - Letters of invitation to our processes