



INTERNATIONAL PACIFIC



HALIBUT COMMISSION

Preliminary results of the 2020 FISS

Agenda item: 4.1

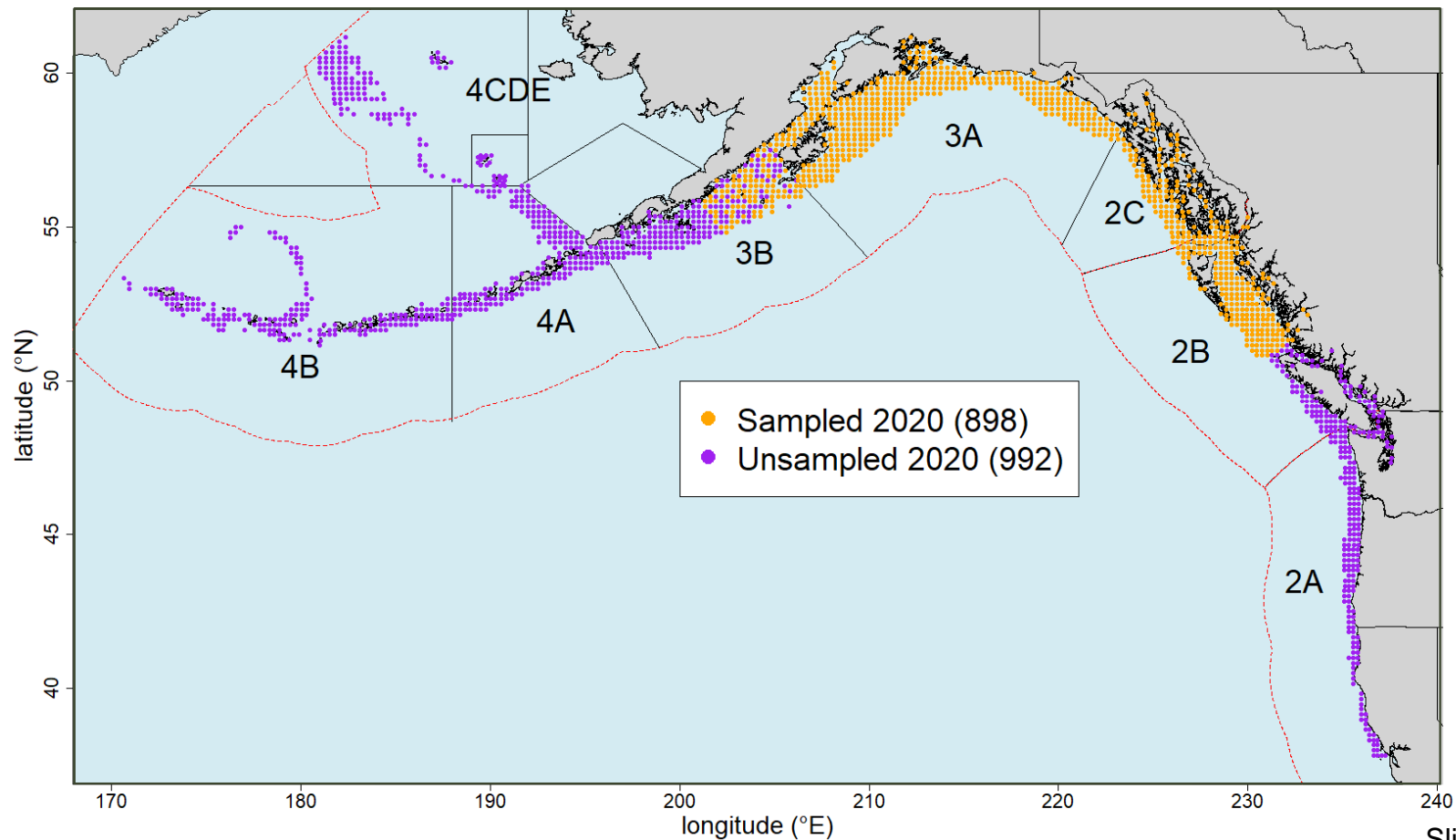
IPHC-2020-SRB017-05

2020 FISS

- First year in which the FISS design was based on the full grid of 1890 stations
 - 6-year planned expansion program completed in 2019
- Due to budgetary constraints and the impact of COVID-19, the implemented design was reduced in spatial extent from designs proposed by staff or approved at AM096

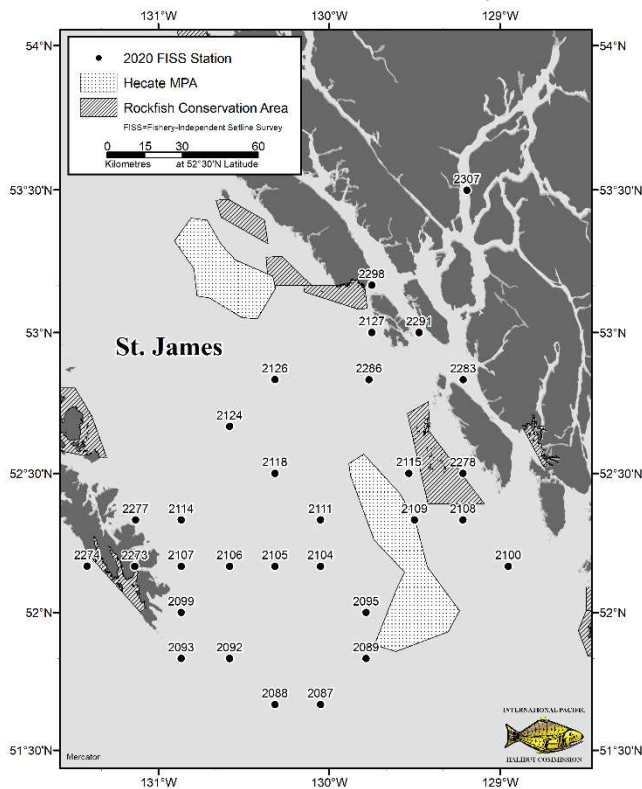


Implemented 2020 FISS design

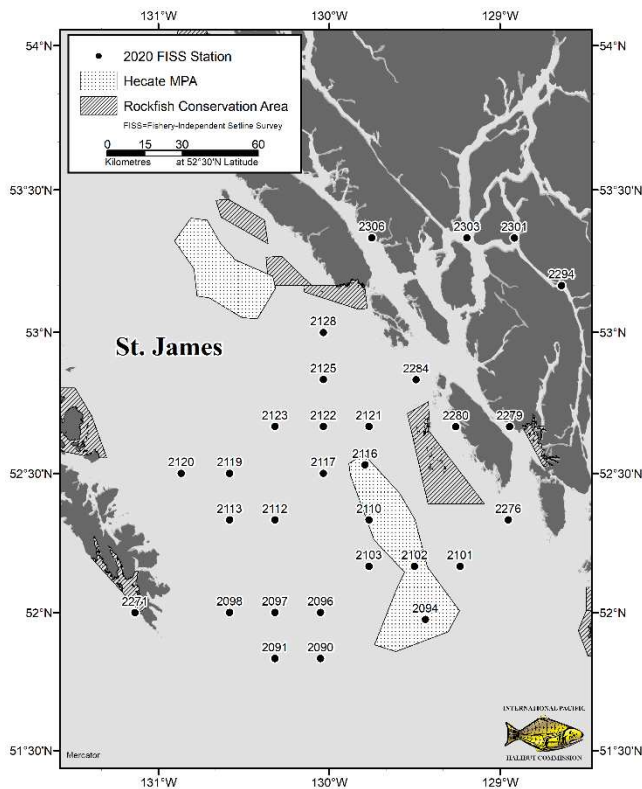


2020 FISS gear comparison in Reg. Area 2B

Fixed Hook Early



Fixed Hook Late



- Fixed hook vs snap gear
- All stations fished twice
- Random selection of gear order



2020 data input updates

- The FISS timing adjustment is being updated using 2019 data (this adjustment has a one-year lag).
- The NMFS Bering Sea trawl survey was not undertaken in 2020.
 - Important data source for Reg. Area 4CDE
- However, the Alaska Department of Fish and Game trawl survey for Norton Sound was successfully completed:
 - Provides our only source of data in the Bering Sea in 2020
- As in 2019, direct measurements of weights will be used in computing weight per unit effort (WPUE) indices for space-time modelling input.

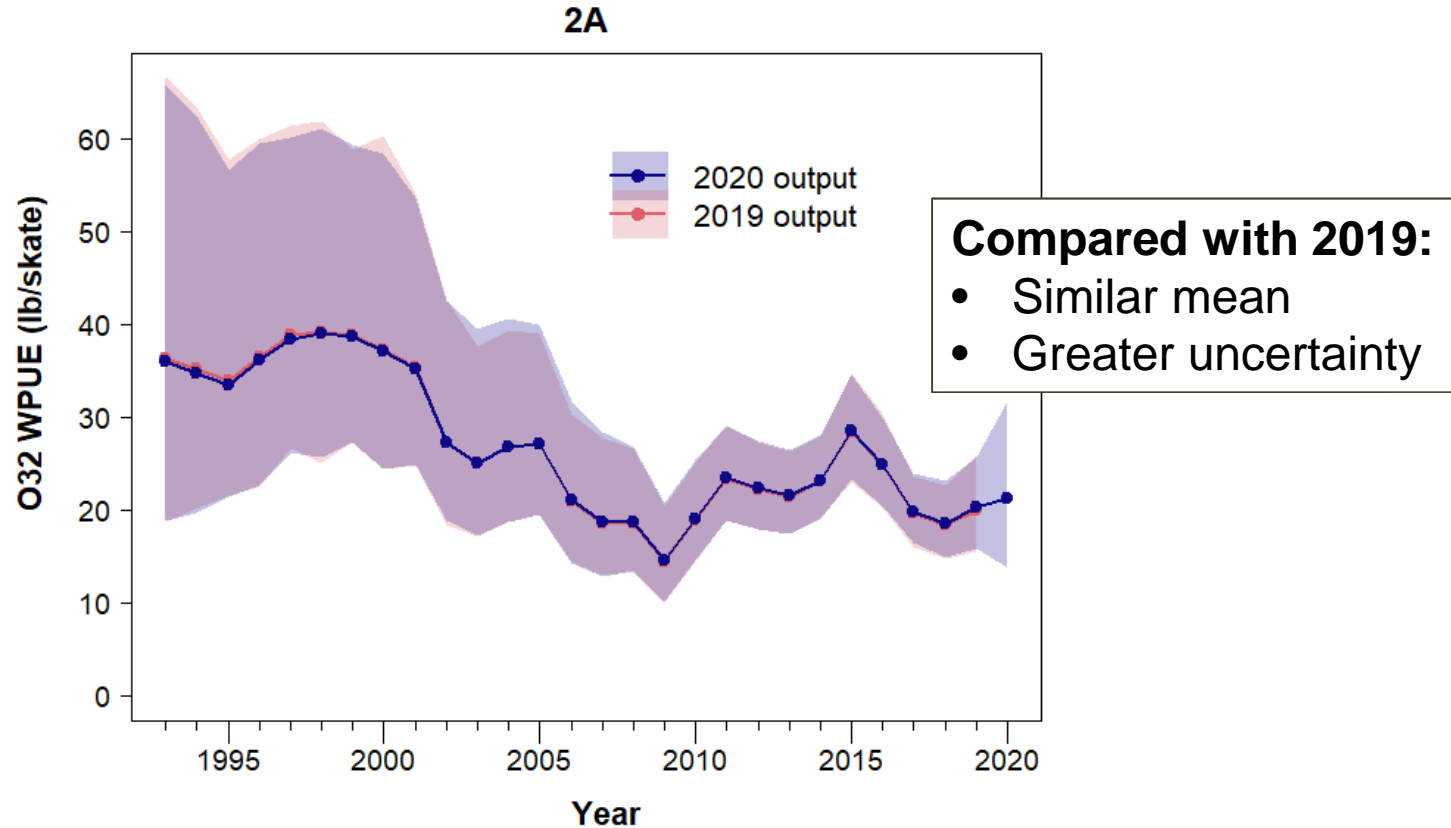


Results of 2020 FISS modelling

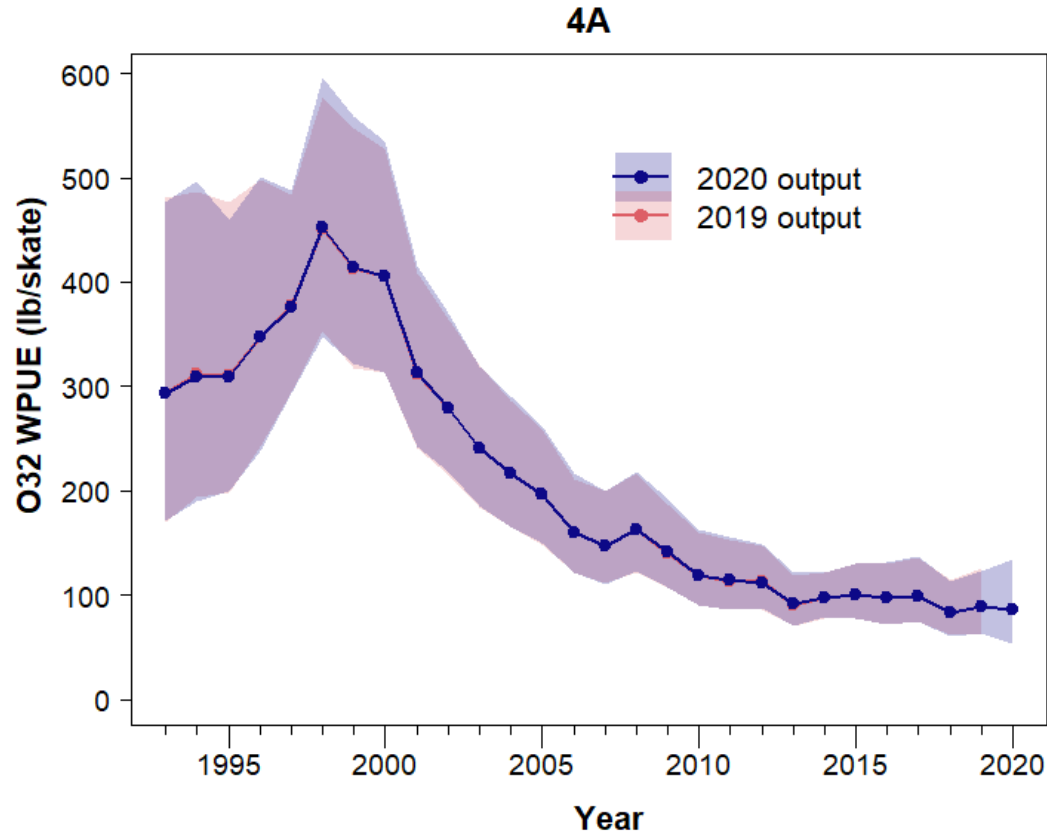
- FISS data are still in preparation, and no modelling results are yet available for areas sampled in 2020
- Raw data indicate that catch rates were generally stable in IPHC Regulatory Areas 2B, 2C and 3B, and up in 3A.
 - Timing and hook competition adjustments not yet applied
- Preliminary modelling of O32 WPUE data from IPHC Regulatory Areas 2A, 4A and 4B has been undertaken:
 - No new data in these areas in 2020
 - Estimates for 2020 depend on past observations via temporal correlation and on covariate relationships estimated from 1993-2019 data within the space-time models.



Preliminary 2020 Regulatory Area 2A modelling results

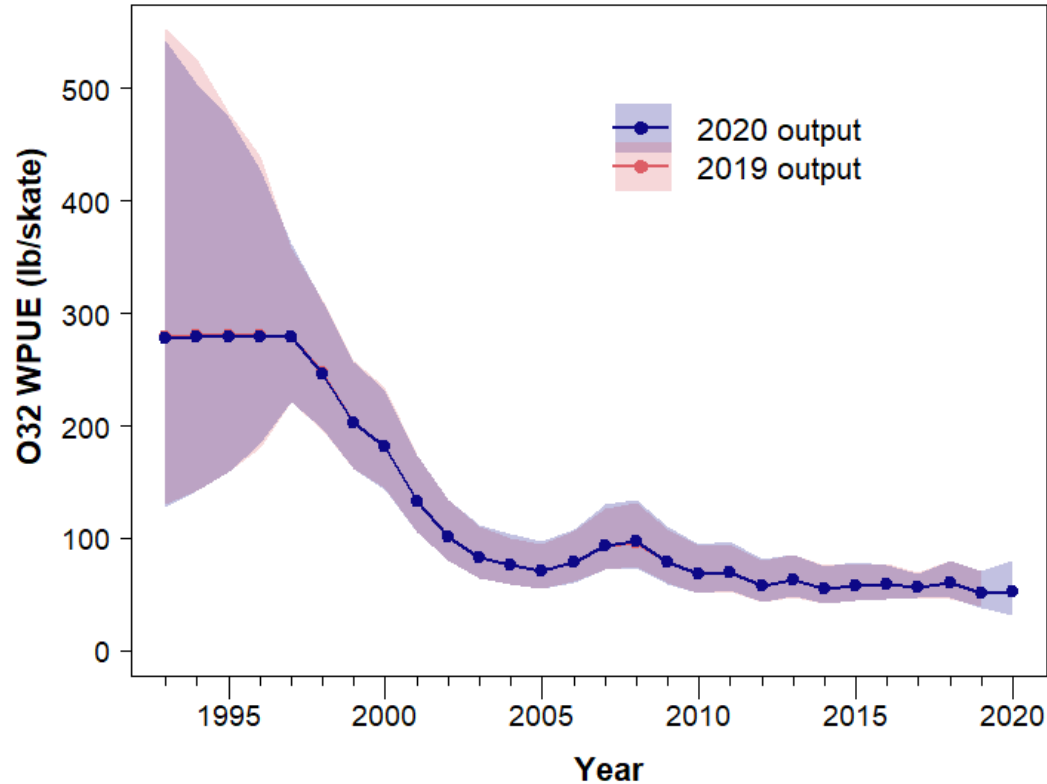


Preliminary 2020 Regulatory Area 4A modelling results



Preliminary 2020 Regulatory Area 4B modelling results

4B



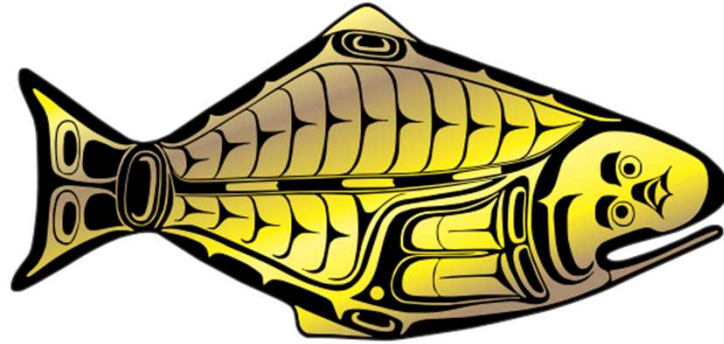
Recommendations

That the SRB:

NOTE paper IPHC-2020-SRB017-05 which provides an update on space-time modelling data inputs for 2020 and preliminary results of 2020 FISS modelling.



INTERNATIONAL PACIFIC



HALIBUT COMMISSION

